



OLCHFA

Dysg Dawn Daioni

Olchfa School Ysgol Yr Olchfa

GCSE *OPTIONS*

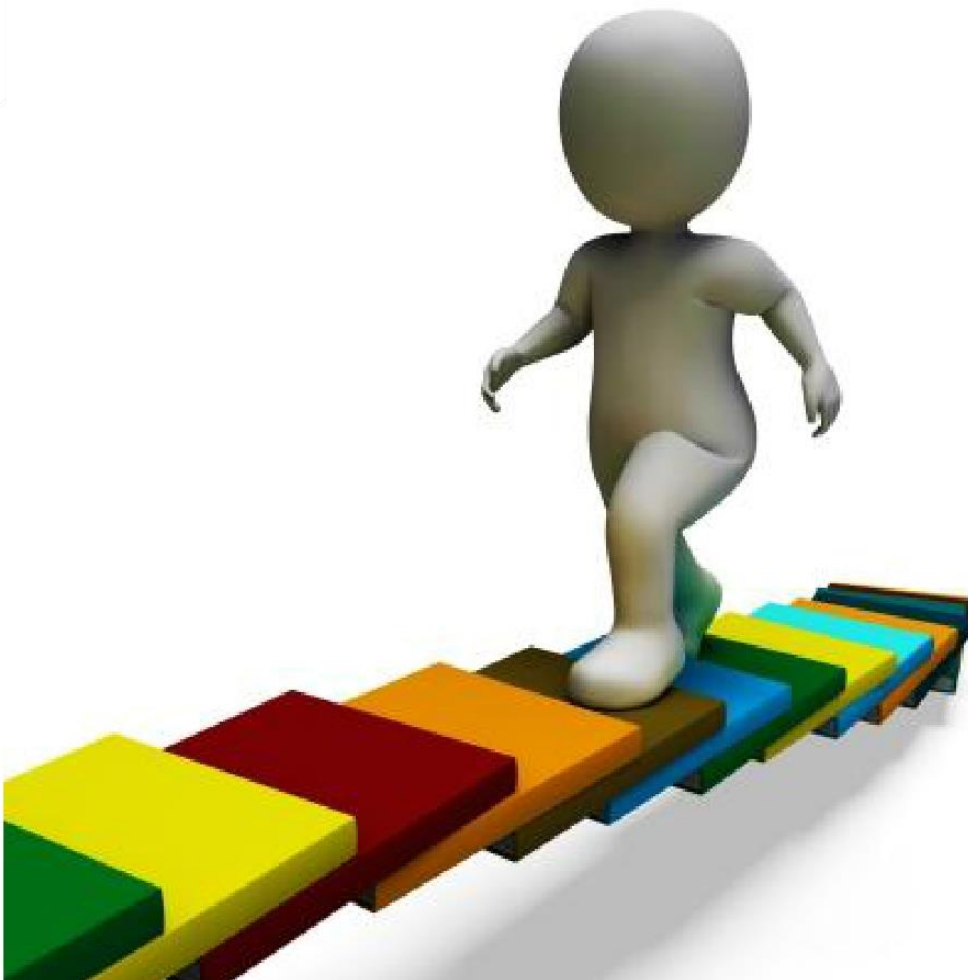
Year 9 (2020 - 2022)



Our Mission at KS4

At Key Stage 4, we believe that:

- All pupils at Olchfa should achieve at least 5 GCSEs or GCSE equivalent qualifications at grades A*- C. This should ideally include Mathematics and English.
- All pupils should achieve the qualifications that they need in order to take the next step in their educational lives. We recognise that the next step may be Olchfa Sixth Form, a local college, a Modern Apprenticeship or employment.
- Every pupil is entitled to the best standards of care, support, guidance and teaching to enable them to fulfil their potential whilst at Olchfa School.



ESTYN's Findings

In the most recent school inspection, the team from Estyn commented that:

"At key stage 4, pupils choose from a wide range of academic and vocational courses. Performance at key stage 4 has been consistently strong in recent years. In most indicators, including the capped points score and the level 2 threshold, including English and Mathematics, the school's performance has been well above expectations. The proportion of pupils gaining five GCSE or equivalent grades at A-A has increased substantially over the last three years and is also well above the average for similar schools. The performance of boys, girls and pupils eligible for free school meals compares very favourably to that of their counterparts in similar schools. All groups of pupils make strong progress from previous key stages."*



Contents Cynnwys

	Page
The Olchfa options process	6
List of subjects available at Key Stage 4	7
Option Blocks	8
Section A : Compulsory subjects at KS4	10
Section B : Optional subjects at KS4	20



December 2020

Dear Year 9 Pupils and Parents/Carers

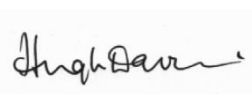
I am delighted to present to you the subjects that will be available for study during Years 10 and 11 at Olchfa School. We have been working very hard over the past few months to ensure that we are able to offer a wide range of exciting options and more flexibility than ever before.

Over the coming weeks, you will need to make some important choices about the next stage of your school career.

You will be carefully supported and guided through the process. The decisions you make about your future options should be based on your achievements to date and expected results at the end of Year 9. There are many new subjects available to you, information on which can be found in this booklet and the subject Google Classrooms (see each subject page for the relevant Google Classroom code). In January, you will have an options check-in with your Form Tutor or Learning Leader. You and/or your parents will also be offered the opportunity to speak with a member of staff if you feel you need more individual guidance and consultation on option choices. Details will be issued separately at the time.

If you have any questions about the options process, you should contact Mr. A. D. Charles (Learning Leader – Year 9) or Mrs. J. Thompson (Assistant Headteacher).

Yours sincerely



H Davies

Headteacher

Rhagfyr 2020

Annwyl Ddisgyblion a Rhieni/Gofalwyr Blwyddyn 9

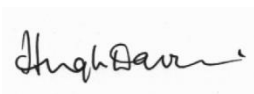
Mae'n bleser gen i gyflwyno y pynciau a fydd ar gael i'w hastudio yn ystod Blynnyddoedd 10 a 11 yn Ysgol Olchfa. Rydyn ni wedi bod yn gweithio'n galed yn ystod y misoedd diwethaf i sicrhau ein bod ni yn gallu cynnig dewis eang o opsiynau cyffrous a mwy o hyblygrwydd nag erioed o'r blaen.

Dros yr wythnosau nesaf bydd rhaid i chi wneud rhai penderfyniadau pwysig am y cam nesaf yn eich gyrfa ysgol.

Cewch gefnogaeth ac arweiniad trwy'r broses. Dylai'r penderfyniadau hyn fod yn seiliedig ar eich cyrhaeddiadau hyd yn hyn a'ch canlyniadau disgwyliedig ar ddiwedd Blwyddyn 9. Mae llawer o bynciau newydd ar gael i chi, mae'r wybodaeth berthnasol yn y llyfryn ac ar Google Classroom (mae'r côd sydd ei angen ar dudalen y pwnc). Ym mis Ionawr byddwch yn cael sgwrs gyda eich tiwtor dosbarth neu arweinydd dysgu i drafod y dewisiadau. Bydd cyfle hefyd i chi a/neu eich rhieni i siarad gyda aelod o staff os dymunwch mwy o arweiniad am yr opsiynau. Bydd y manylion hyn yn cael ei ddosbarthu yn agosach at yr amser.

Os oes gyda chi unrhyw gwestiynau am broses y dewisiadau, cysylltwch â Mr A.D. Charles, Arweinydd Dysgu Blwyddyn 9, neu Mrs J. Thompson, Pennaeth Cynorthwyol.

Yr eiddoch yn gywir



H Davies

Prifathro

The Olchfa Options Process Y Broses Opsiynau yn yr Olchfa



December 2020 -

Year 9 Reports issued to parents. Options Information booklets issued to pupils.

8th January 2021 -

Deadline for option choices (completed on-line). All pupils will have an options check-in with their Form Tutor. In some cases, pupils may be offered additional guidance if required. Parents/Carers are invited to participate in this consultation.



Fulfilling Your Options Choices

At Olchfa, we try very hard to fulfil the option choices of every pupil. However, there are rare occasions where we will be unable to meet these requests. We may not be able to offer some courses where there is a very low demand. Where some courses are over-subscribed, or where there are timetabling complications, we may have to offer some pupils a second choice. In these circumstances, pupils and parents/carers will be fully involved in discussing any changes. Please be aware that some subject combinations may not be possible due to timetabling constraints.

What can I study in Years 10 & 11?

Beth alla i astudio ym mlwyddyn 10 ac 11?

We want to make sure that you study a balanced range of subjects in Years 10 and 11. All pupils will study the following subjects:

- English Language
- English Literature
- Mathematics – Numeracy
- Science (Double or Triple Award)
- Welsh
- Religious Studies
- Careers and Health Education
- Welsh Baccalaureate

In addition, pupils may choose **three** subjects from the following list, all of which lead to Level 2 qualifications (G.C.S.E. or equivalent).

- | | |
|--|---------------------|
| • Art and Design | • Public Services |
| • Business | • Religious Studies |
| • Computer Science | • Retail Business |
| • Design and Technology | • Spanish |
| • Digital Technology | • Sport |
| • Drama | • Textile Design |
| • French | • Tourism |
| • Geography | • Triple Science |
| • Graphic Communication | |
| • Health and Social Care and Childcare | |
| • History | |
| • Hospitality and Catering | |
| • Media Studies | |
| • Music | |
| • Physical Education | |



GCSE Options for September 2021

The table below puts subjects into 3 columns – Option A, Option B and Option C. You need to choose one subject from each column to make up your option choices.

If you wish to choose Triple Science, you must select Triple Science in one column only.

You will need to fill in your choices on the google form that will be sent to your Olchfa email address.

The deadline for submitting your Option choices is 8th January 2021

If you have any difficulty accessing or filling out the google form, please email Mr. A. D. Charles.

Option A	Option B	Option C
Art	Business	Art
Business	Computer Science	Business
Computer Science	Drama	Health and Social Care and Childcare
D&T Product Design	D&T Product Design	History
Geography	Hospitality and Catering	Digital Technology
History	French	Media Studies
Health and Social Care and Childcare	Graphic Communication	Music
PE	Geography	PE
Retail Business	History	Spanish
Religious Studies	PE	Sport
Textile Design	Public Services	French
Triple Science	Spanish	Tourism
	Triple Science	Triple Science

Please note that a subject will be withdrawn from our offer if insufficient pupils choose to study it. If this is the case, you will have the opportunity to select another subject. On rare occasions, minor changes may have to be made to the option blocks at a later date.

Religious Education Addysg Grefyddol

Religious Education is a series of compulsory, non-examinable lessons that take place once a fortnight. These lessons focus on familiarising pupils with World Religions in addition to Christianity. Pupils are also encouraged to explore and debate how faith influences issues facing the modern world.

Olchfa Pathway to Learning

At Olchfa, all pupils will experience a series of lessons known as PSE sessions. Pupils will work on their **OPAL** (the **Olchfa Pathway to Adult Learning**) booklets throughout the 9 sessions that are delivered over the course of the academic year. Our aim is to give pupils the opportunity to start preparing for life beyond school. These lessons will link closely to the Four Purposes identified by Professor Graham Donaldson. They also link to Careers and the World of Work and the Sexuality and Relationships education guidance from the Welsh Government.

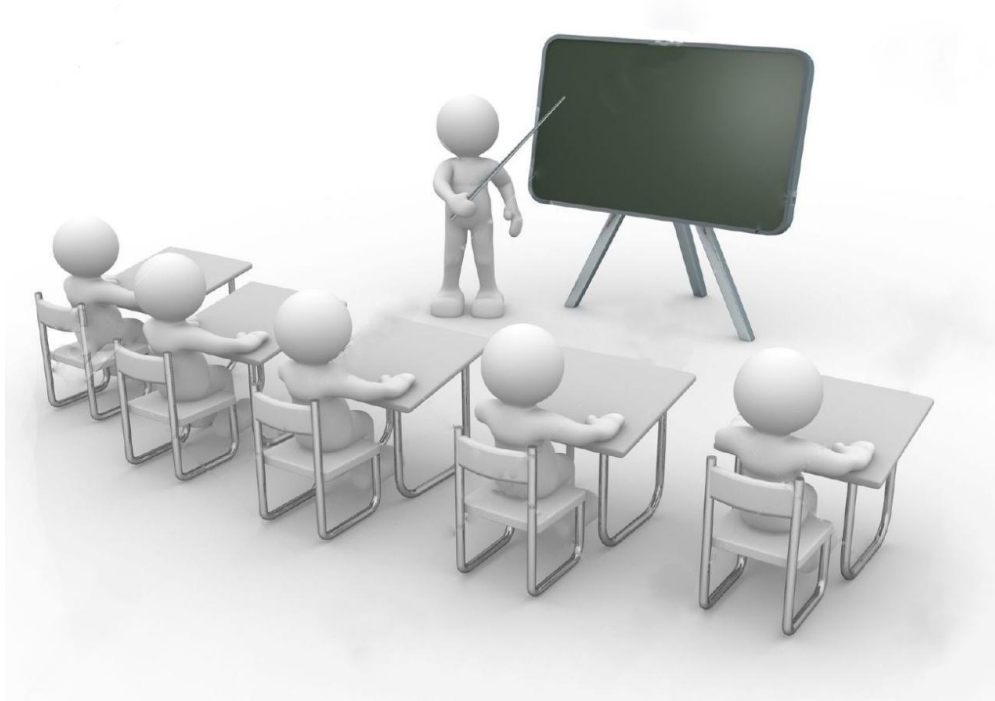
Topics covered include:

Digital Citizenship, Personal Skills and qualities, Keeping a clear and Healthy mind, Careers Wales-Labour market information, Careers Wales - Career Check, Challenging Extremism, Employed versus Self Employed.

In addition, each pupil will have the option to choose between two options in Health and Wellbeing - 'Elite and Compete' or 'Me, Myself and I.'

In Elite and Compete, the focus will be on developing their application of practical skills and developing their theoretical knowledge.

In Me, Myself and I, the focus is on developing a positive mind set and taking part in non-competitive enriching and physical activities that will enhance the individual holistically.



Core Curriculum Subjects Pynciau Craidd



All pupils will follow the subjects in this section

English Language - Saesneg Iaith

English Literature - Llenyddiaeth Saesneg

Mathematics - Mathemateg

Science - Gwyddoniaeth

Welsh – Cymraeg

Welsh Baccalaureate- Bagloriaeth Cymru

ENGLISH LANGUAGE AND ENGLISH LITERATURE

Saesneg Iaith a Llenyddiaeth Saesneg



Which teacher should I see about the course?

Mrs. J. Kennedy or any English teacher

What course will I be following?

GCSE English Language and GCSE English Literature (WJEC)

What kinds of things will I study?

Starting in Year 10, you follow a two year course with the aim of achieving *two separate* qualifications.

- **GCSE English Language:**

The main focus is on developing thinking and communication skills through oracy, reading and writing. You will build on the skills, knowledge and understanding acquired in iCommunicate English. There is some study of literature and also the reading and understanding of non-fiction texts. You will be given opportunities to develop writing and improve confidence through speaking activities.

- **GCSE English Literature:**

You will study novels, short stories, plays and poetry, exploring ideas such as characters, themes and settings within these texts. The focus is on developing an analytical mind, as well as fostering a love of reading for pleasure!

How will my work be assessed?

- **English Language:** 2 exams, 2 hours each (worth 80%)
Non-examination assessment: two speaking and listening tasks (20%)
- **English Literature:** 2 exams, 2 hours each (worth 75%) Non-examination assessment:
2 controlled assessments (25% of course)

How can I use this course after Year 11?

English Literature and a combined English Language /Literature course can both be studied at A Level in Olchfa School. English is a vital skill that is necessary in all jobs, particularly for written and spoken communication. Qualifications in English can lead to careers in journalism, law, media, advertising, teaching and television.

What else do I need to know?

Your English teacher will be able to answer any questions about the subject.

MATHEMATICS AND MATHEMATICS - NUMERACY

Mathemateg a Mathemateg Rhifedd



Which teacher should I see about the course?
Miss P. Stevens

What course will I be following?
Students will study for two GCSEs in Mathematics

GCSE Mathematics – Numeracy (WJEC)
This will focus on numeracy and the mathematics needed for everyday life.

GCSE Mathematics (WJEC)
This will extend to other aspects of mathematics, including those needed for progression to scientific, technical or further mathematical study. It will include the application of algebra, geometry and probability in real-life contexts.

There are three tiers of entry for this qualification

- Higher Tier (Grades A* - C)
- Intermediate Tier (Grades B - E)
- Foundation Tier (Grade D – G)

What kind of things will I study?

The four main areas are:

- Number (e.g. percentages, decimals, household finance)
- Algebra (e.g. equations, substitution, factorizing)
- Geometry and Measure (e.g. angles, constructions, symmetry, circles)
- Statistics (e.g. statistical diagrams, probability)

How will my work be assessed?

Each GCSE has two papers.

- Unit 1 Non-calculator
- Unit 2 Calculator

(Foundation 1½ hours each; Intermediate and Higher 1¾ hours each)

How can I use this course after year 11?

Mathematics is an extremely useful subject to study as it occurs in other subjects such as Physics, Chemistry, Biology, Geography, Business, and Economics. AS level can be studied in Year 12 leading to the full A level in Year 13.

What else do I need to know?

Mathematics is a compulsory subject at GCSE as it frequently occurs in our everyday life. Many employers request a C grade as do most universities. Some degree courses may require a minimum of B grade (e.g. engineering, medicine, and teaching). It is expected that most young people in Wales will take both Mathematics GCSEs.

SCIENCE

Gwyddoniaeth

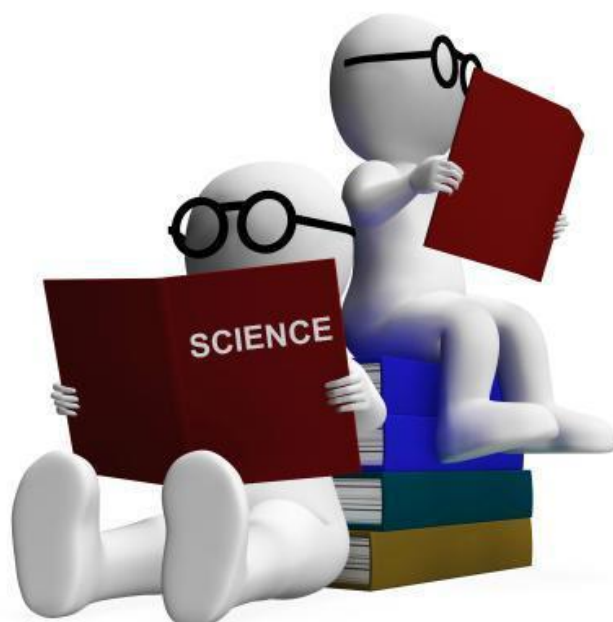
In Wales, pupils will need to study for at least 2 qualifications in Science.

At Olchfa, we offer you two ways to study Science in Years 10 and 11.

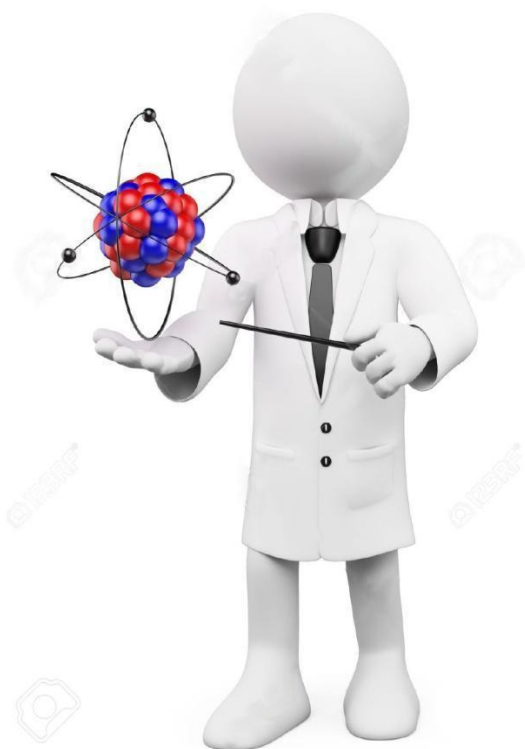
- **Triple Award Science** – Biology, Chemistry and Physics are taught as three separate subjects leading to three GCSE qualifications. This is a good option for those who have achieved a strong level of performance at Key Stage 3. Pupils who are considering A Level science courses and careers in medical, scientific or veterinary fields are strongly recommended to consider this option.
- **Science (Double Award)** – This option leads to 2 GCSE qualifications in Science.

NB.

Please remember that if you choose Triple Science, this will take up one of your three choices in the optional subjects.



SCIENCE (Double Award) Dyfarniad Dwbl



Which teacher should I see about the course?

Mr. C. Humphris

What course will I be following?

Science (Double Award) GCSE

What kinds of things will I study?

You will study aspects of all three sciences in this subject. The Biology topics include Keeping Healthy, The Use and Abuse of Drugs, Genetics and Evolution. In Chemistry you will study Fundamental Ideas in Chemistry, Metals and their Uses and Oils. In Physics, Energy, Heat transfer and Waves are some of the key areas.

How will my work be assessed?

Assessment is by a combination of written examinations and a practically based controlled assessment. The written papers account for 90% of the total marks and the controlled assessment task for the remaining 10%.

How can I use this course after Year 11?

Successfully completing this will allow you to opt for any of the AS and A Level science's which could lead you into career areas ranging from astrophysics and computing through engineering, forensics, geology, medicine and physiotherapy to space research and zoology.

What else do I need to know?

There are six written examinations each worth 15% of the total mark allocation. Three examinations will be completed at the end of Year 10 and the remaining three at the end of Year 11. The practical assessment will normally be completed in Year 11.

BIOLOGY (Triple Science Option)

Bioleg



Which teacher should I see about the course?

Mr. D. Llewellyn

What course will I be following?

GCSE Biology (WJEC)

What kinds of things will I study?

- **Biology Unit 1** – Cells, respiration, digestion, circulatory system, plants and photosynthesis, ecosystems and human impact on the environment.
- **Biology Unit 2** - Classification and biodiversity, cell division and stem cells, DNA and inheritance, variation and evolution, response and regulation, kidneys and homeostasis, micro-organisms and their applications, disease.

How will my work be assessed?

Biology 1 - Written Exam 45% (June Year 10)

Biology 2 - Written Exam 45% (June Year 11)

Controlled assessment 10%

How can I use this course after Year 11?

Biology is a good choice if you really enjoy Science. It provides an excellent foundation for A level study and is a very rewarding and worthwhile subject for the development of essential skills. Biology provides an excellent platform for medicine, veterinary science, biochemistry, microbiology and para medical careers.

What else do I need to know?

GCSE Biology is part of Triple Science (with Chemistry and Physics). If you want to study this, you must choose Triple Science as one of your options.

CHEMISTRY (Triple Science Option)

Cemeg



Which teacher should I see about the course?
Mr. R. Yates

What course will I be following?
GCSE Chemistry (WJEC)

What kinds of things will I study?

- **Chemistry Unit 1** – The nature of substances and chemical reactions, atomic structure and the Periodic Table, water, the ever-changing Earth, rate of chemical change, limestone
- **Chemistry Unit 2** – Bonding, structure and properties, acids, bases and salts, metals and their extraction, chemical reactions and energy, crude oil, fuels and organic chemistry, reversible reactions, industrial processes and important chemicals.

How will my work be assessed?

Chemistry 1 – Written Exam worth 45% (June Year 10)

Chemistry 2 – Written Exam worth 45% (June Year 11)

Controlled assessment - worth 10%

How can I use this course after Year 11?

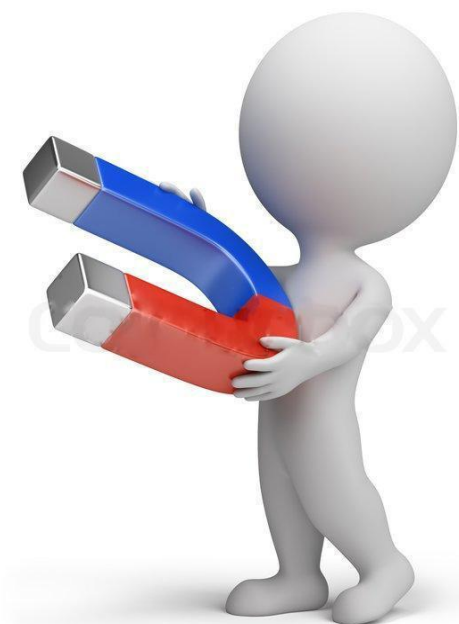
Chemistry is a good option if you enjoy Science. It provides an excellent foundation for progression to AS and A Level Chemistry. It is a very rewarding and worthwhile GCSE for the development of essential skills. The course also provides an excellent platform for careers in engineering, veterinary science and the medical and pharmaceutical fields.

What else do I need to know?

GCSE Chemistry is part of Triple Science (with Biology and Physics). If you want to study this, you must choose Triple Sciences as one of your options.

PHYSICS (Triple Science Option)

Ffiseg



Which teacher should I see about the course?

Miss D. Blythe

What course will I be following?

GCSE Physics (WJEC)

What kinds of things will I study?

- **Physics Unit 1** Electric circuits, generating electricity, making use of energy, domestic electricity, features of waves, the total internal reflection of waves, seismic wave, kinetic theory, electromagnetism
- **Physics Unit 2** - Distance, speed and acceleration, Newton's laws, work and energy, further motion concepts, stars and planets, the Universe, types of radiation, half-life, nuclear decay and nuclear energy

How will my work be assessed?

Physics 1- Written exam worth 45% (June of Year 10)

Physics 2 - Written exam worth 45% (June of Year 11)

Controlled assessment - worth 10%

How can I use this course after Year 11?

Physics is a good option if you enjoy Science. It provides an excellent foundation for Advanced Level Physics. It is a very rewarding GCSE which furthers the development of your essential skills. Physics is recommended if you are considering a career in medicine, engineering, astronomy, architecture, forensic science, aeronautics, climatology and many more.

What else do I need to know?

GCSE Physics is part of Triple Science (with Biology and Chemistry). If you want to study this, you must choose Triple Science as one of your options.

WELSH FULL COURSE

Cymraeg Cwrs Llawn



Which teachers should I see about the course?

Mrs. E. Madoc-Jones, Mrs. A. Williams,
Miss T. Ridings

What course will I be following

TGAU Cymraeg (WJEC)
GCSE Welsh (WJEC)

What kinds of things will I study?

The context for learning the language is organised under three broad themes:

- **EMPLOYMENT** - Cyflogaeth
- **WALES AND THE WORLD** – Cymru a'r Byd
- **YOUTH** - Leuenctid

The candidates will be learning how to build their confidence and knowledge in:

- **Listening:** understand and respond to different types of spoken language;
- **Speaking:** communicate and interact effectively for different purposes, including conveying information, expressing and justifying opinion, and asking and answering questions;
- **Reading:** understand and respond to different types of written language;
- **Writing:** write effectively and accurately for different purposes using simple and familiar sentences

How will my work be assessed?

Unit 1 - Oracy response to visual material. Non-examination assessment.	25%
Unit 2 - Speaking and Listening task. Non-examination assessment.	25%
Unit 3 - Written Exam with reading and writing tasks. 1 hour 30 minutes.	25%
Unit 4 - Written Exam with reading and writing tasks. 1 hour 30 minutes	25%

How can I use this course after Year 11?

To further develop bilingual skills, you can study the new AS / A Level Welsh 2nd Language course in Years 12/13.

The course aims to build confidence in communicating effectively on various topics in Welsh and develop bilingual skills which fulfil the needs of candidates, employers and further education.

What else do I need to know?

Possible careers looking for Welsh skills and qualification include education, media, local government, police, journalism, health authorities, business and the public sector.

WELSH BACCALAUREATE AT KEY STAGE 4

Bagloriaeth Cymru



The central focus of Welsh Baccalaureate at Key Stage 4 is to provide a vehicle for 14 – 16 year olds to consolidate and develop essential and employability skills. Welsh Baccalaureate is based on a Skills Challenge Certificate and supporting qualifications.

The **Skills Challenge Certificate** consists of four components which are followed by all learners:

- Individual Project – 50%
- Enterprise and Employability Challenge – 20%
- Global Citizenship Challenge – 15%
- Community Challenge – 15%

When completing the three challenges, at least one must be completed individually and at least one must be completed as a team with between three to six members.

Through the challenges, you will develop and need to demonstrate a proficiency in the seven essential and employability skills shown below:

- Literacy
- Numeracy
- Digital Literacy
- Critical Thinking and Problem Solving
- Planning and Organization
- Creativity and Innovation
- Personal Effectiveness

The Skills Challenge Certificate is equivalent to one GCSE and is graded.

In addition to the Skills Challenge Certificate, further qualifications are needed in order to gain the full Welsh Baccalaureate. These include:

- GCSE English Language at grade A* - C
- GCSE Mathematics-Numeracy at grades A* - C
- Three further GCSEs

Grading the Welsh Baccalaureate at Key Stage 4

The qualification can be awarded at Foundation or National Grade. The National Skills Challenge Certificate is graded A* - C. The Foundation Skills Challenge Certificate is graded Foundation Pass* or Foundation Pass.

Optional Subjects Pynciau Dewisol



Please remember:

If you want to study Triple Science you must choose Triple Science as one of your optional subjects.

ART & DESIGN

Celf a Dylunio



Which teachers should I see about the course?

Mrs. H. Morris

What course will I be following?

GCSE Art and Design (WJEC)

What kinds of things will I study?

You will develop an understanding of Art and Design by learning about a variety of artists, designers and craftspeople. You will experiment with an exciting range of different media, materials and techniques to improve your skills. You will be encouraged to use your imagination to be creative and expressive in your personal responses. As your confidence grows, you will be able to have more freedom to select your own themes and ideas

How will my work be assessed?

Coursework 60%

Controlled assignment 40%

How can I use this course after Year 11?

You can progress with your studies in Art and Design by studying AS Level in the sixth form.

An Art qualification shows that you are an imaginative, creative person who manipulates materials and ideas effectively to solve problems. Art and Design will enhance your thinking skills and levels of communication, both of which are important in further education and the world of work. There are career opportunities in graphics, textiles and fashion, 3D studies, photography, fine art and communication.

What else do I need to know?

- Exhibitions and gallery visits are very important.
- Use of a camera is helpful for research purposes and development of ideas.
- Art is an enjoyable but time consuming activity, so commitment to the subject is vital.

*****Please note –Art cannot be taken in conjunction with Graphics GCSE or Textile Design GCSE.**

BUSINESS

Busnes



Which teachers should I see about the course?

Mr. M. Reekie, Mr. E. Walters.
Mr. S. Miah

What course will I be following?

GCSE Business (WJEC)

What kinds of things will I study?

You will develop an understanding of how businesses work and critically think through different areas of the business world. All aspects of the workings of a business are studied, along with how different organisations affect the rest of society. Topics will include advertising, how to create successful businesses, introducing new products and working out the profits of a company.

How will my work be assessed?

62.5% of the marks will be from an examination with a mix of short answer and structured questions on stimulus material covering all of the specification content.

37.5% of the marks will be from an examination with data response questions covering all of the specification content.

How can I use this course after Year 11?

Within the sixth form there are two A Level courses which allow you to progress in this subject area.

There is the Business Studies course which is assessed through end of year examination. The other is Economics which is also assessed through end of course examinations.

Business Studies gives an excellent grounding for the world of work and is a valued qualification by employers. It is therefore an excellent way of entering employment or starting your own business.

COMPUTER SCIENCE

Cyfrifiadureg



Which teachers should I see about the course?
Mr. D. Joslin

What course will I be following?
GCSE Computer Science (WJEC)

What kinds of things will I study?

- You will develop your understanding of the way computers work
- You will apply the concepts of computer science including; computer logic, algorithms and data representation
- You will solve problems in computational terms including; writing and debugging pieces of code.
- You will be encouraged to create your own applications and other systems, rather than simply use those designed by others.

How will my work be assessed?

Unit 1- Understanding Computer Science (Exam: 1hr 45mins) – 50%

Unit 2 – Computational Thinking and Programming (On-Screen Exam: 2 hrs) – 30%

Unit 3 – Software Development (Controlled Assessment: 20 hrs) – 20%

How can I use this course after Year 11?

Computing is always developing and expanding – current students need to be prepared for jobs that don't yet exist and use technologies that haven't been invented. The demand for computing professionals in this area is increasing. The depth of coverage means that it provides a solid foundation for either the study of A Level Computer Science or employment.

What else do I need to know?

The controlled task will be completed during Year 10 with both the written and on screen examinations taking place at the end of Year 11. In addition to the traditional Office suite of packages, this course will immerse you in the experience of modern programming languages and programming to enhance existing applications. Your problem solving skills will be developed as well as your programming skills.

DESIGN AND TECHNOLOGY – PRODUCT DESIGN

Dylunio a Thechnolog



Which teachers should I see about the course?

Mr. S. Doe

What course will I be following?

GCSE D&T Product Design (WJEC)

What kinds of things will I study?

Year 10 is a foundation year which enables you to produce a number of projects using a wide range of materials and processes. The subject also gives you the opportunity to design and produce products for your own hobbies and interests. In Year 11 you will undertake a controlled assessment task (CAT) that is produced in school.

How will my work be assessed?

All projects are assessed against the same design process followed in Key Stage 3 and the final controlled assessment is worth 50% of your final grade. The 50% examination completes the subject at the end of Year 11.

How can I use this course after Year 11?

The subject enables you to study A Level D&T Product Design at Olchfa. The subject also enables you to apply for apprenticeships and courses at local companies and colleges.

What else do I need to know?

The subject requires you to present your work effectively, using a range of graphic skills that present innovative and creative designs. You must then show good levels of accuracy in the construction of the final product.

Mr. D. Joslin

GCSE Digital Technology (WJEC)

You will learn about how digital technology impacts on the lives of individuals, organisations and society. The Digital Technology GCSE will enable learners to:

- Become independent, confident and knowledgeable users of existing, new and emerging digital technologies
- Develop knowledge of different digital technology systems used across a range of occupational sectors
- Develop skills in organising and analysing data to identify trends and audiences
- To become creators of digital products, in a variety of formats and for a variety of purposes, that meet specified, authentic needs
- Develop transferable skills in using a range of hardware and software
- Develop their understanding of the systems development life cycle and how ideas can become products.

Unit 1 – The Digital World (On Screen Exam: 1½ hours) - 40%

Unit 2 – Digital Practices (Non-Exam Assessment (NEA): 30 hours) - 40%

Unit 3 – Communicating in the Digital World (Non-Exam Assessment (NEA): 15 hours) - 20%

We are living and developing in an ever changing digital world - the Digital Technology qualification is designed for learners who wish to begin their journey towards a career that utilises digital technologies or to progress onto advanced level programmes of learning involving digital technologies.

The GCSE Digital Technology is a broad-based qualification that allows learners to build on their digital skills, knowledge and understanding of technology systems that are used in our connected and globalised society. The NEA tasks will allow you to immerse yourself into the world of big data and digital technologies. The NEA tasks will allow you to further your understanding in social media and online marketing communications, as well as creating digital assets, such as: a website, an animation or a game and modelling data using spreadsheet software as well as planning digital communications to solve a problem.

DRAMA

Drama



Which teachers should I see about the course?
Mrs. Z. Beynon

What course will I be following?
GCSE Drama (WJEC)

What kinds of things will I study?

You will be studying various theatre practitioners their respective styles in order to create devised pieces of theatre and performing from scripts. You will develop and hone your characterisation and performance skills.

How will my work be assessed?

Throughout the course, 40% of your work will be assessed through scripted and devised practical performances. A further 20% will come from a written evaluation of your performance. The final 40% of the course will be a written examination on a set text that has been studied practically in class.

How can I use this course after Year 11?

There are many Further Educational courses that Drama leads the way to, such as A Level Drama, Theatre Arts, Performing Arts BTEC and Production Arts BTEC. Following on from this, there are many reputable Performance degrees available at Universities, and Diplomas from Drama Schools. In terms of transferable skills, your communication skills, creativity, cooperation skills and public speaking skills will all have developed over the two years. These are all valuable skills that can be utilised in all areas of further education and future employment.

What else do I need to know?

Commitment to after school and lunch time rehearsals is essential. Participation in Extra Curricular performances is encouraged as it gives you the opportunity to progress and try out new skills





FRENCH

Ffrangeg

Which teachers should I see about the course?

Mrs. N. Smart, Mrs. A. Davies, Mrs. E. Lewis,
Mrs. R. John

What course will I be following?

GCSE French Full Course (WJEC)

What kinds of things will I study?

Broad themes, building on topics studied in Key Stage 3, for example:

Identity and culture

Youth culture: self and relationships, technology and social media

Lifestyle: health and fitness, entertainment and leisure

Customs and traditions: food and drink, festivals and celebrations

Wales and the world (areas of interest)

Home and locality: local areas of interest, travel and transport

The wider world: local and regional features of French-speaking countries, holidays and tourism

Global sustainability: environment, social issues

Current and future study and employment

Current study: school/college life studies.

Enterprise, employability and future plans: employment, skills and personal qualities, Post – 16 study, career plans.

How will my work be assessed?

The exam at the end of Year 11 is divided up equally across the four skill areas: READING, LISTENING, SPEAKING and WRITING. Each exam is worth 25%.

How can I use this course after Year 11?

Following on with AS/A Level or with the following careers:

Teaching, translating, interpreting, business services, community services, finance, tourism, public administration, education, sporting careers, journalism, accountancy, hospitality industry, sales and marketing, law, medicine, acting, TV and radio presenting, manufacturing, diplomatic services, police force, European Union, government and many more.....

What else do I need to know?

For further information, speak to your class teacher or arrange to see Mrs. N. Smart (Room 21). If you are particularly good at or enjoy languages, it may be appropriate to choose both Spanish and French for GCSE.

GEOGRAPHY

Daearyddiaeth



Which teachers should I see about the course?

Miss C. Toulcher, Mrs. G. Quick or Mrs. J. Thompson

What course will I be following?

GCSE Geography (WJEC)

What kinds of things will I study?

The dangerous world

What makes living by volcanoes so dangerous? How can we stop them?

The human world

How has shopping changed? Are sustainable communities the future?

The uneven world

Where are the richest cities and why? How can we help communities develop?

The physical world

Why do rivers flood? What makes the Gower coast so distinctive?

How will my work be assessed?

Two external exams = 80%

Controlled assessment = 20% (two fieldwork days)

How can I use this course after Year 11?

Geography is a subject which suits almost everybody; from scientific people to artistic people. You should be confident at writing in detail, dealing with numbers and analysing information. Geographers go into a wide variety of professions and it is a subject highly valued by employers. According to many, Geography graduates are the most employable in the country due to the wide variety of skills they acquire from studying the subject.

What else do I need to know?

In the past, we have taken our Year 10 students to Italy to study plate tectonics.

GRAPHIC COMMUNICATION

Cyfathrebu Graffeg



Which teacher should I see about the course?

Mr. N. Francis

What course will I be following?

GCSE Art: Graphic Communication (WJEC)

What kinds of things will I study?

You will develop an understanding of Graphics by learning about a variety of artists and Graphic designers. You will experiment with an exciting range of different media, materials and techniques to improve your skills. You will be encouraged to use your imagination to be creative and expressive in your personal responses. You will learn how to use both Illustrator and Photoshop. As your confidence grows, you will be able to have more freedom to select your own themes and ideas.

How will my work be assessed?

Coursework 60%

Practical examination 40%

How can I use this course after Year 11?

You could progress with your studies of Graphics by studying AS Level Graphics at A level.

What else do I need to know?

You may be a creative person, like using computers, love attention to detail or like to draw/doodle from time to time. If you're one of the above, you will enjoy Graphics.

*****Please note – Graphics cannot be taken in conjunction with Art GCSE or Textiles GCSE.**

HEALTH AND SOCIAL CARE AND CHILDCARE

Iechyd a Gofal Cymdeithasol a Gofal Plant



Which teachers should I see about the course?

Ms. C. Samuel, Mrs. A. Donald.

What course will I be following?

GCSE Health and Social Care and Childcare (WJEC)

What kinds of things will I study?

You will learn about:

- Promoting and Maintaining health and Well-being (coursework unit). In this unit you will look at Service provision and Health Promotion
- Human Growth, Development and Well-being (exam unit). In this unit you will learn about Physical, social and intellectual health, The importance of active participation on development and Wellbeing, Early intervention and prevention to promote and support growth, development and well-being for a range of conditions and circumstances.

How will my work be assessed?

- A piece of coursework worth 60% and an exam worth 40%.

How can I use this course after Year 11?

- You can continue to study Health and Social Care in Olchfa Sixth form at AS and A2 level.
- You can take a degree in Health and Social Care at university.
- This can lead to many careers such as nursing, midwifery, teaching, social work, child psychology.

What else do I need to know?

- The Health, Wellbeing and Social Care sector is the biggest employer in South Wales, creating more jobs than any other sector.
- Our GCSE and A level results are excellent, with many pupils going on to successfully study a related course in higher education.

HISTORY

Hanes



Which teachers should I see about the course?

Mrs. K. Wall, Mrs. D. Thomas, Mr. R. Sanger, or Ms. J. Morris

What course will I be following?

GCSE History (WJEC).

What kinds of things will I study?

The USA: A Nation of Contrasts, 1910-1929.

Changes in Crime and Punishment c.1500 to the present day.

Britain at War, 1930 – 1951.

Non-examination Assessment: 'Why was Jack the Ripper never caught?'

How will my work be assessed?

Two examinations worth 25% and one worth 30% of the GCSE.

Non-Examination Assessments (two essays written in class) one worth 20% of the GCSE.

How can I use this course after Year 11?

The skills you develop studying GCSE History give you an excellent platform from which to access a whole range of post-16 courses. As well as History, you can use your skills in subjects such as Politics, Religious Studies and Geography.

What else do I need to know?

Like all GCSE subjects, History requires commitment and hard work. The ability to read and write in detail and to work well with sources is also vital. However, it is also great fun, very well respected by employers and universities and offers a very good base for those considering any job or career where you need to analyse evidence or build an argument – journalism, law, politics, business amongst others.

HOSPITALITY AND CATERING

Lletygarwch ac Arlwyio



Which teachers should I see about the course?

Mrs. K. Scordino

What course will I be following?

WJEC Level 1 /2 Hospitality and Catering

What kinds of things will I study?

You will develop a knowledge and understanding of the hospitality and catering industry. You will learn how to plan, prepare and cook nutritional dishes, including starters, main meals and desserts. You will develop the practical skills required within the catering sector, completing tasks that mirror industry practice.

How will my work be assessed?

WJEC Vocational Awards in Hospitality and Catering consist of two units:

Unit 1: The Hospitality and catering industry, this focuses on learning about different types of providers, legislation, food safety and the roles and responsibilities within the sector. This unit will be assessed by an external exam worth 40% of the qualification.

Unit 2: Hospitality and catering in action, will develop your practical skills for planning, preparing, cooking and presenting nutritional dishes meeting the client needs. This unit will be assessed by controlled assessments worth 60% of the qualification.

How can I use this course after Year 11?

You can progress to the Level 3 Applied Certificate / Diploma in Food Science and Nutrition Level 2/Level 3 Diplomas in Hospitality and Catering, Level 2/Level 3 Diplomas in Professional Cooking or the Level 3 Diploma in Hospitality and Tourism Management.

What else do I need to know?

Photographs of your practical work will be taken to support assessment. The British Hospitality Association, hospitality and catering is Britain's fourth largest industry and accounts for around 10% of the total workforce. Since 2010, over 25% of all new jobs have been within the hospitality and catering sector with the majority of new roles falling within the 18-24 age groups.

MEDIA STUDIES

Cyfryngau



Which teacher should I see about the course?
Mr. D. Thomas

What course will I be following?
GCSE Media Studies (WJEC)

What kinds of things will I study?
The GCSE Media Studies course is extremely exciting and you will be studying a range of topics. Some topics you will cover include:

- Advertising
- Newspapers
- Hollywood Films
- Popular British television
- Media Production

How will my work be assessed?
40% Coursework, 60% Examination.

A large portion of the coursework is of a practical nature. You will be given the opportunity to create your own media products from a brief provided by the WJEC. In previous years pupils have created a number of products including short films and magazine pages. The examinations cover a number of topics including music videos, advertising, Hollywood films and popular British television.

How can I use this course after Year 11?

You may wish to use your qualification to study Media at AS and A Level or you may wish to pursue a career in the media.

Media students often go on to pursue careers in:

- Journalism
- Television production
- Advertising
- Website design

What else do I need to know?

While the course is extremely interesting and exciting it is not about watching films every lesson! A lot of hard work is needed to be successful and it will include a lot of essay writing/ extended written responses for the examination portions of the course.



MUSIC

Cerddoriaeth

Which teachers should I see about the course?
Mr. A. Colborne

What course will I be following?
GCSE Music (WJEC)

What kinds of things will I study?

GCSE Music is an interesting and creative course that equips pupils with a number of valuable skills.

At Olchfa we follow the WJEC course, this provides opportunities for:

- a) already accomplished musicians to develop their talents and intensify their studies;
- b) all pupils who may have enjoyed the subject during Key Stage 3 and are now keen to further their interest and improve their musical skills.

Similarly, to KS3, activities are centred on performing, composing and appraising are central to the course. These allow you to:

- Become actively engaged in all aspects of music-making
- Perform confidently
- Analyse and appraise music taken from a wide variety of styles
- Develop composing skills, presenting well organized and stylish musical ideas

How will my work be assessed?

35% Performing – You will perform and record two pieces, ideally of a Grade 3 standard (there is no requirement to have sat the Grade 3 examination)

35% Composing – You will compose two pieces of music (You may use computer software if you wish).

30% Appraising – You will sit a listening examination at the end of Year 11 that will ask questions on pieces of music in a range of styles, from Classical to Pop

How can I use this course after Year 11?

Studying Music has an enormous range of benefits. It promotes creativity, self-discipline and analytical skills to name but a few. After Year 11, you could go on to study AS Music at Olchfa. Music is classified as an academic qualification by the Russell group of universities, meaning it combines well with any subject at A Level.

What else do I need to know?

Commitment to after school and lunch time rehearsals is essential. Participation in Extra Curricular performances is encouraged as it gives you the opportunity to progress and try out new skills.

PHYSICAL EDUCATION

Addysg Gorfforol



Which teachers should I see about the course?

Mrs. B. Battison, Mr. S. Davey,
Mr. C Reeves, Miss E. Gazzi, Miss C. Warlow,
Mr. L. Clement, Mr L. Eynon, Mrs C. James, Miss J. Brown

What course will I be following?

GCSE Physical Education (WJEC)

What kinds of things will I study?

The course is a combination of both practical and theory work. Practical lessons focus on developing skills and understanding in a wide variety of different sports. You can also get assessed in sports you play outside school that we are unable to cater for (e.g. skiing). Theory lessons involve detailed study of topics such as fitness, psychology, anatomy, nutrition and sports technology

How will my work be assessed?

Practical performance and understanding in **three** separate sports account for 50% of your overall mark.

Theoretical understanding makes up the final 50% and is assessed by an external examination paper at the end of Year 11.

How can I use this course after Year 11?

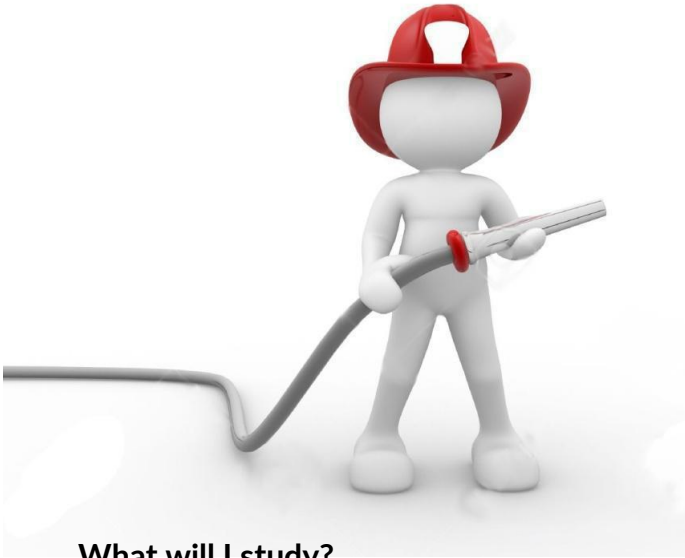
You could develop your understanding further by studying AS level PE or BTEC Sport in the Sixth form. For anyone who is interested in a possible career in the sports industry, this course is an excellent starting point. Potential career opportunities in the fields of teaching, physiotherapy, strength and conditioning, coaching, psychology and nutrition could be areas that this qualification may benefit.

What else do I need to know?

As 50% of your final mark will come from your practical performance, being a good all-round performer with a keen interest in sport will be a real advantage. However, the most important thing you need is a genuine interest in developing your understanding and performance in all aspects of sport and PE.

PUBLIC SERVICES

Gwasanaethau Cyhoeddus



Which teacher should I see about the course?

Mrs. B. Lewis and Mr. L. Eynon

What course will I be following?

BTEC First Award in Public Services Level 2

Outcome: one GCSE equivalent.

What will I study?

You will study teamwork and communication skills needed for working in public services and the employment skills required to work in the uniformed organisations. In addition, you will look at improving health and fitness in the uniformed organisations.

How will my work be assessed?

BTECs Firsts are divided into:

- Core or mandatory units
- Optional specialist units

Each unit covers a specific area of knowledge, skills and understanding required by the sector.

Every BTEC First learner will study the mandatory units, ensuring all students gain a solid foundation through a broad understanding and knowledge of the sector.

75% internally assessed assignments, reports, guest speakers, presentations and group work. All learning outcomes must be met to pass the course.

25% externally assessed by a one hour 50 mark test.

How can I use this course after Year 11?

It is an excellent gateway qualification to access the next level of Public Services study.

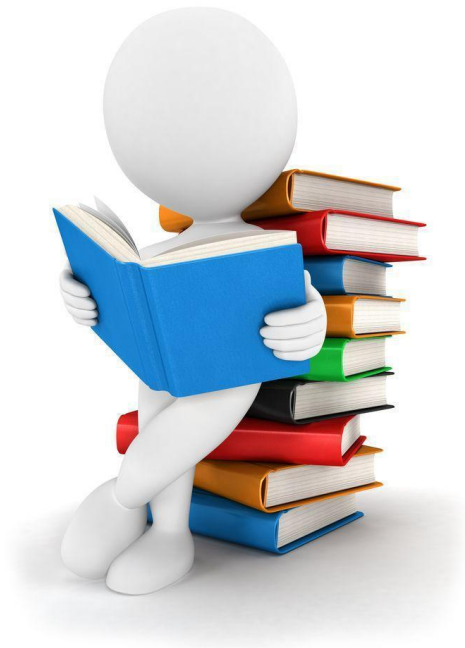
If you are considering studying Public Services Level 3 at college, this is an excellent starting point.

As well as gaining a formal qualification, Public Services teaches us how to develop a whole host of very important life skills (speaking, listening, empathy, understanding teamwork, patience, problem solving and the ability to work well with others to name but a few.



RELIGIOUS STUDIES

Astudiaethau Crefyddol



Which teachers should I see about the course?

Mr. P. Llewellyn

What course will I be following?

GCSE Religious Studies (WJEC)

What kinds of things will I study?

You will be studying religion by looking at the impact of religious teachings and beliefs on peoples' way of life. The course will look in a thematic way at some of the fascinating central questions and issues in human life and experience. It will cover the relevance of religious beliefs, practices, values and traditions to the following topics:

- A study of the core beliefs and teachings and practices of Christianity and Islam.
- A study of the two philosophical themes of life and death, good and evil from the perspectives of Christianity and Islam. Topics include: the afterlife, environmental responsibility, euthanasia, abortion, the quality and the sanctity of life and the soul.
- A study of the two ethical themes of Relationships and Human Rights. Including topics such as: Relationships, sexual relationships, Issues of equality, prejudice and discrimination, human rights and justice as well as issues of wealth and poverty.

How will my work be assessed?

Two 2 hour examinations at the end of Year 11.

How can I use this course after Year 11?

The course provides the basis for further study at AS and A2 Level.

RETAIL BUSINESS

Business Adwerth



Which teachers should I see about the course?
Mr. S. Miah

What course will I be following?
Level 2 Award in Retail Business (WJEC)
Outcome: one GCSE equivalent

What kinds of things will I study?

You will have the opportunity to explore various aspects of retail business. The different topic areas include customer experience, retail business and retail operation.

How will my work be assessed?

There will be one externally assessed examination worth 25% and two internally assessed (and externally moderated) controlled assessments worth 75%.

How can I use this course after Year 11?

The successful completion of this qualification, together with other equivalent qualifications, could provide you with opportunities to access a range of Level 3 qualifications including GCE Advanced Level Business and Economics.

What else do I need to know?

You will be visiting a range of retailers and working directly with people in the retail sector.





SPANISH

Sbaeneg

Which teachers should I see about the course?

Mrs. N. Smart, Mrs. A. Davies,
Mrs. E. Lewis, Mrs. R. John

What course will I be following?

GCSE Spanish Full Course (WJEC)

What kinds of things will I study?

Three broad themes, building on topics studied in Key Stage 3, for example:

Identity and culture

Youth culture: self and relationships, technology and social media

Lifestyle: health and fitness, entertainment and leisure

Customs and traditions: food and drink, festivals and celebrations

Wales and the world (areas of interest)

Home and locality: local areas of interest, travel and transport

The wider world: local and regional features of Spanish – speaking countries, holidays and tourism

Global sustainability: environment, social issues

Current and future study and employment

Current study: school/college life, studies
Enterprise, employability and future plans: employment, skills and personal qualities, Post-16 study, career plans

How will my work be assessed?

The exam at the end of Year 11 is divided up equally across the four skill areas: READING, LISTENING, SPEAKING and WRITING. Each exam is worth 25%.

How can I use this course after Year 11?

Following on with AS/A Level or with the following careers:

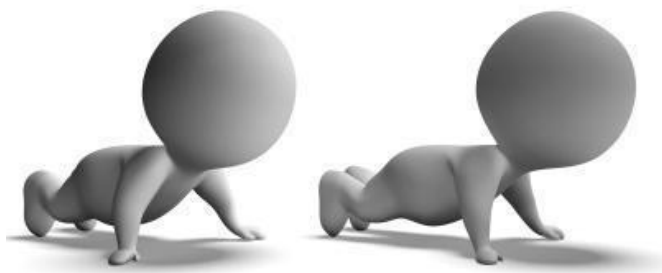
Teaching, translating, interpreting, business services, community services, finance, tourism, public administration, education, sporting careers, journalism, accountancy, hospitality industry, sales and marketing, law, medicine, acting, TV and radio presenting, manufacturing, diplomatic services, police force, European Union, government and many more.....

What else do I need to know?

For further information, speak to your class teacher or arrange to see Mrs. N. Smart (Room 21). If you are particularly good at or enjoy languages, it may be appropriate to choose both Spanish and French for GCSE.

SPORT

Chwaraeon



Which teachers should I see about the course?

Mrs. B. Lewis and Mr. L. Clement, Mrs. C. James

What course will I be following?

BTEC Level 2 First Award in Sport Outcome:

One GCSE grade equivalent

What kinds of things will I study?

Fitness for Sport & Exercise

Practical sport (two sport)

Leading Sports Activities

Training for Personal Fitness

The Mind and Sports Performance

How will my work be assessed?

75% of the course is based around three controlled assessment tasks. The other 25% consists of an exam sat at the end of year 11. The assignments will all be set by your teachers based on information provided by the exam board.

How can I use this course after Year 11?

You can study BTEC National Level 3 in Sport which is worth one A Level or study AS Physical Education. This course will provide a solid foundation for anyone wishing to go into a career in physiotherapy, sports science or teaching physical education.

What else do I need to know?

You need to have a keen interest in sport and while practical ability is not essential, it is desirable.

You must be prepared to research and study all aspects of sport.

You will also have the opportunity to achieve coaching / leadership qualifications

TEXTILE DESIGN

Dylunio Tecstilau



Which teachers should I see about the course?

Mrs. H. Morris, Mrs. A. Dunne

What course will I be following?

GCSE Art and Design - Textile Design (WJEC)

What kinds of things will I study?

You will develop an understanding of Textile Design by learning about a variety of artists, designers and craftspeople. You will experiment with an exciting range of textile media, processes and techniques to improve your skills. You will be encouraged to use your imagination to be creative and expressive in your personal responses. As your confidence grows, you will be able to have more freedom to select your own themes and ideas.

How will my work be assessed?

Coursework 60%

Controlled assignment 40%

How can I use this course after Year 11?

You can progress with your studies in Creative Textiles by studying AS Level Textile Design or Art and Design in 6th Form.

A Textile Design qualification shows that you are an imaginative, creative person who manipulates materials and ideas effectively to solve problems. Textile Design will enhance your thinking skills and levels of communication, both of which are important in further education and the world of work. The further education pathways include Art, fashion and textile degrees, textile science and technology, performance sportswear design, garment technology, fashion pattern cutting and contour fashion.

What else do I need to know?

- Exhibitions and gallery visits are very important.
- Use of a camera is helpful for research purposes and development of ideas.
- Textile Design is an enjoyable and practical subject and time consuming activity, so commitment to the subject is vital.

*****Please note – Textiles cannot be taken in conjunction with Art GCSE or Graphics GCSE.**

TOURISM

Twristiaeth



Which teacher should I see about the course?
Miss C. Toulcher

What course will I be following?
Tourism Level 2 Award (WJEC) Outcome: one GCSE equivalent

What kinds of things will I study?

The Tourism Level 2 Award introduces you to one of the most important and dynamic employment sectors in the UK. You will have the opportunity to explore various aspects of tourism such as the business of tourism and developing UK tourist destinations

How will my work be assessed?

75% of the course is based around two controlled assessment tasks. These are similar to coursework tasks but are completed in class. The other 25% consists of an exam sat at the end of Year 11.

How can I use this course after Year 11?

The WJEC Level 2 Award in Tourism is designed to help you learn about tourism, especially if you wish to pursue a career in this sector. This course is also suitable as a foundation for further study.

What else do I need to know?

Tourism is one of the fastest growing industries in the UK.





OLCHFA

Dysg Dawn Daioni

Olchfa School Ysgol Yr Olchfa

GCSE *OPTIONS*

Year 9 (2020 - 2022)

