



OLCHFA

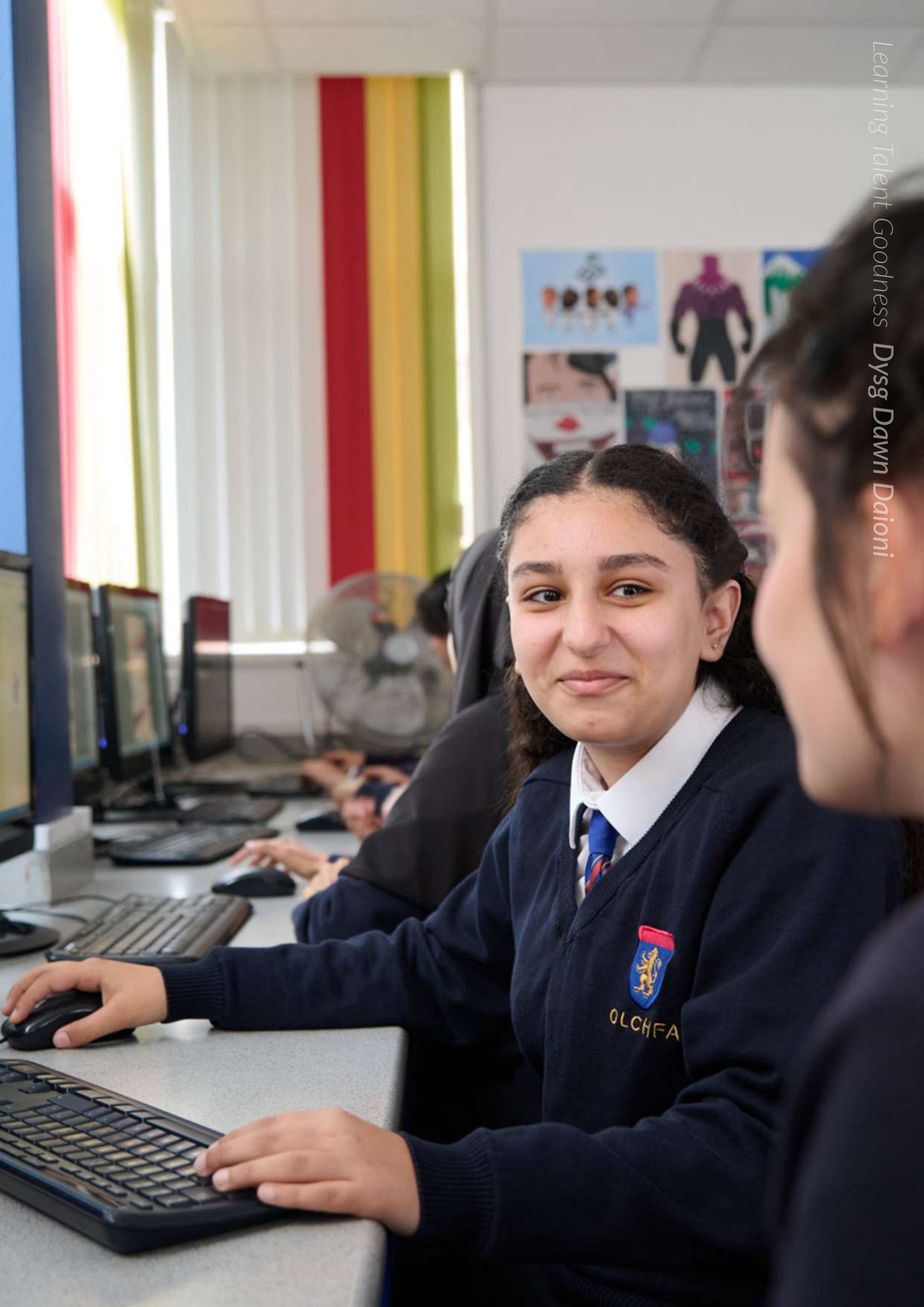
Dysg Dawn Daioni

OLCHFA SCHOOL / YSGOL YR OLCHFA

GCSE OPTIONS

YEAR 9 (2026 - 2028)





Learning Talent Goodness Dysg Dawn Daioni



Learning Talent Goodness **Dysg Dawn Daioni**

Contents

The Olchfa Options Process - key dates at a glance	Page 5
What will I study in Years 10 and 11?	Page 6
The core and optional subjects available in Year 10 and 11	Page 7
Option blocks for September 2026	Page 8
Wider learning and experiences	Page 9
Section A : Core subjects in Year 10 and 11	Page 10
Section B : Optional subjects in Year 10 and 11	Page 20



Dear Pupils, Parents and Carers,

It is my pleasure to present you with this information regarding the options process. You are at the stage of your school life where you have some big decisions to make. I hope this helps you to choose carefully.

Over the next few weeks you will receive information about subjects, about how to make choices and about important deadlines. Here at Olchfa we are able to offer a broad range of subjects to choose from. Some will be new to you; others will be familiar. Hopefully, this will allow you to make a balanced and exciting choice of subjects.

Last year, many of the subjects on offer were in the first wave of the 'Made for Wales' GCSE's introduced across the country. They were slightly different in terms of content and assessment to what has gone before. This year more subjects have been included in Wave 2 of the new GCSE's:

There is lots of information available for you including:

- Information in this booklet
- Information on the subject via Google Classroom (codes are in this booklet)
- Conversations with staff

In January, you will have an options check-in with your Form Tutor or Learning Leader. If you need more support at that point, you and your parents (or whoever looks after you) will be offered the chance to meet with a staff member for individual guidance. I hope this helps you make choices that work for you. Remember also to consider what you are good at and what you enjoy.

I wish you well at this exciting time.

Yours faithfully/ yn gywir



Mr J Kennedy
Headteacher/Pennaeth



The Olchfa Options Process - key dates at a glance

Y Broses Opsiynau yn yr Olchfa - Cipolwg ar ddyddiadau allweddol

December 2025	You will receive an email containing the Options booklet and a link to the Google form where you can submit your choices.
15th January 2026	Year 9 Parent / Carer Evening (details to follow)
23rd January 2026	The deadline for submitting your option choices via the Google Form sent to your Olchfa email address is Friday 23rd January 2026 .
January 2026	You will have an options check-in with your Form Tutor or Learning Leader. If needed, additional guidance may be provided, and your parent / carer may be invited to join the discussion.



What will I study in Years 10 & 11?

Beth bydda i'n astudio ym Mlwyddyn 10 ac 11?

At Olchfa, we believe that:

- *You should achieve the qualifications needed to take the next step in your educational journey, whether that's progressing to Olchfa Sixth Form, a local college, an apprenticeship, or entering employment. We are committed to supporting you in making informed decisions, ensuring you gain essential qualifications including in literacy and numeracy.*
- *You should study a broad and balanced curriculum. Our diverse range of optional subjects allows you to choose subjects to study in Year 10 and 11 that suit your interests, talents and future aspirations.*
- *You should have opportunities to engage in wider learning experiences that support your development as enterprising, creative, healthy, and ambitious individuals, as well as responsible members of society.*
- *You should receive the best standards of care, support, guidance and teaching to enable you to fulfil your potential.*

Details about which subjects you must study, which you can choose, and the other lessons which make up your timetable in Year 10 and 11 are on the next pages.



What will I study in Years 10 & 11?

Beth bydda i'n astudio ym Mlwyddyn 10 ac 11?

All pupils will study the following **core subjects**, all of which lead to Level 2 (GCSE or equivalent) qualifications:

- English Language and Literature
- Mathematics and Numeracy
- Science (Double or Triple Award)
- Welsh - Cymraeg
- Skills Challenge Certificate

Detailed information on all core subjects is in **Section A** of this booklet.

In **addition**, you may choose **three optional subjects** from the following list, all of which lead to Level 2 (GCSE or equivalent) qualifications:

- Art and Design
- Business
- Computer Science
- Design And Technology - Three Dimensional Design
- Digital Technology
- Drama
- French
- Geography
- Graphic Communication
- Health and Social Care and Childcare
- History
- Hospitality and Catering
- Digital Media and Film
- Music
- Physical Education and Health
- Public Services
- Religious Studies
- Retail Business
- Spanish
- Sport
- Textile Design
- Tourism
- Triple Science

Detailed information on all optional subjects is in **Section B** of this booklet. At the bottom of each subject page you will also find a code to a Google classroom, where you can access additional information on each subject.

Option blocks for September 2026

Blocliau opsiwn ar gyfer Medi 2026

The table below puts all the optional subjects into 3 columns, or blocks. You need to choose **one subject from each column** and select them on the Google form that is sent to your Olchfa email address and submit this form.

If you wish to choose **Triple Science**, you must select Triple Science in **one column only**.

The deadline for submitting your Option choices is Friday 23rd January 2026.

If you have any difficulty accessing or filling out the Google form, please email Mr A Marsh: ajm@olchfa.org.uk

Option A	Option B	Option C
Business	Art & Design	Art & Design
Computer Science	Business	Business
Digital Technology	Design Technology - Three Dimensional Design	Retail Business
Drama	Digital Technology	Computer Science
French	Graphic Communication	Design Technology - Three Dimensional Design
Geography	Health & Social Care and Childcare	History
Health & Social Care and Childcare	History	Hospitality & Catering
Hospitality & Catering	Digital Media & Film	Music
History	Physical Education & Health	Physical Education & Health
Physical Education & Health	Religious Studies	Spanish
Public Services	Sport	Textile Design
Triple Science	Tourism	Triple Science
	Triple Science	

Fulfilling your option choices

At Olchfa, we aim to accommodate every pupil's option choices. However, if demand is low for certain courses, or if there are timetabling conflicts, we may need to offer an alternative choice. Occasionally, changes to option blocks may be necessary, and in such cases, pupils and parents/carers will be fully involved in the decision-making process.

What will I study in Years 10 & 11?

Beth bydda i'n astudio ym Mlwyddyn 10 ac 11?

In addition to the core and optional subjects, you will also have **wider learning and experiences**. These are compulsory but **not examined**. They are included in the curriculum to support your development as enterprising, creative, healthy and ambitious individuals ready to live fulfilling lives as valued members of society.

Religion, Values and Ethics - Addysg Grefyddol

In Religion, Values and Ethics, you will explore religious and non-religious beliefs, teachings, and practices from your local community, Wales, and around the world. You will examine how beliefs influence people's lives and gain an understanding of diverse perspectives on ethical issues and life's big questions. This subject helps you become an informed, empathetic, and respectful member of society. Lessons take place once every fortnight.

iDevelop - iDdatblygu

As you begin preparing for life after Year 11, we understand that while this is an exciting time, it can also feel overwhelming. The iDevelop programme is designed to support your transition and overall development. It covers key themes from Careers and Work-related Experiences, as well as Relationships and Sexuality Education, as outlined by the Welsh Government. Topics include digital citizenship, personal skills and qualities, health and well-being, insights from Careers Wales on the labour market, the difference between being employed and self-employed, financial literacy, current global events, revision strategies, empathy, and mindset. The iDevelop programme helps you become an informed, healthy, and enterprising citizen, both of Wales and the world. It is delivered during form time by your tutors, alongside eight 'Taith' sessions throughout the year.

Health and Wellbeing - Games - Iechyd a Lles - Gemau

Additionally, you will have four timetabled lessons each week to support your Health and Wellbeing.

In Year 10, two of these lessons will be practical sessions where you will choose an activity or sport to participate in for the half term, with a variety of options available throughout the year. The other two lessons will focus on supporting your physical, social, and mental health, as well as preparing you for life after Year 11.

In Year 11, three of the lessons will continue to be practical, with you selecting your preferred activity or sport for each half term. The fourth lesson will have a careers focus, helping you explore your next steps after school.

Section A - Rhan A

Core subjects - *Pynciau Craidd*

All pupils will follow the subjects in this section, all of which lead to qualifications:

English Language and Literature
Saesneg Iaith a Llenyddiaeth

Mathematics and Numeracy
Mathemateg a Rhifedd

Science
Gwyddoniaeth

Welsh
Cymraeg

The Skills Challenge Certificate
Tystysgrif Her Sgiliau



ENGLISH LANGUAGE AND LITERATURE

Saesneg Iaith a Llenyddiaeth

Which teacher should I see about the course?

Mrs. R. Lent-Thomas or any English teacher

What course will I be following?

GCSE English Language and Literature (WJEC)

What kinds of things will I study?

Starting in Year 10, you will follow a two year course with the aim of achieving a combined qualification worth two GCSEs.

You will study six units covering a range of themes and topics from Shakespeare to Poetry. You will also develop thinking and communication skills through oracy, reading and writing. You will build on the skills, knowledge and understanding acquired in iCommunicate English. You will study both literary and non-fiction texts, including poetry and Shakespeare. You will be given opportunities to develop writing and improve confidence through speaking activities.

How will my work be assessed?

This qualification is assessed through both NEAs (non-examination assessments completed in class) and written examinations.

Unit 1: Context and Meaning - Written Examination: 1 hour 30 minutes

Unit 2: Belonging - NEA: 7 hours

Unit 3: Influence and Power - NEA: 5 hours 55 minutes

Unit 4: Motivations - Written Examination: 1 hour 30 minutes

Unit 5: Continuity and Change - NEA: 8 hours

Unit 6: Connections - Written Examination: 1 hour 30 minutes

How can I use this course after Year 11?

English is a vital skill that is necessary in all jobs, particularly for written and spoken communication. At Olchfa, we offer A Level courses in English Literature and a combined English Language /Literature. Qualifications in English can lead to careers in journalism, law, media, advertising, teaching, television, film and in many other sectors.

What else do I need to know?

Your English teacher will be able to answer any questions about the subject.

MATHEMATICS - NUMERACY

Mathemateg a Rhifedd

Which teacher should I see about the course?

Mrs N. Escudero or any Maths teacher

What course will I be following?

GCSE Mathematics And Numeracy (Double Award)

There are two tiers of entry for this qualification

- Higher Tier: A* – D
- Foundation Tier: C – G

Learners may be entered at different tiers across units.

What kinds of things will I study?

The four main areas are:

- Number (e.g. percentages, decimals, household finance...)
- Algebra (e.g. equations, sequences, linear graphs...)
- Geometry and Measures (e.g. angles, constructions, shapes, scale drawings...)
- Statistics and Probability (e.g. represent, interpret and display results, finding probabilities...)

How will my work be assessed?

There will be 3 units:

- Unit 1: Financial Mathematics and Other Applications of Numeracy (30% of qualification) Calculator allowed
- Unit 2: Non-calculator (30% of qualification) Calculator NOT allowed
- Unit 3: Calculator-allowed (40% of qualification) Calculator allowed

How can I use this course after Year 11?

Mathematics is an extremely useful subject to study as it occurs in other subjects such as Physics, Chemistry, Biology, Geography, Business, and Economics. AS level can be studied in Year 12 leading to the full A level in Year 13. Beyond the links of mathematical concepts to other subjects, this course will also help you in your future as you will develop understanding of finance and how to apply mathematical methods to personal and other real-world contexts, including those related to money and the workplace.

What else do I need to know?

Mathematics is a compulsory subject at GCSE as it frequently occurs in our everyday life. Many employers request a CC grade as do most universities. Some degree courses may require a minimum of BB grade (e.g. engineering, medicine, and teaching).

SCIENCE

Gwyddoniaeth

At Olchfa, we offer you two ways to study Science in Years 10 and 11.

- **Triple Award Science** – Biology, Chemistry and Physics are taught as three separate subjects leading to three GCSE qualifications. This is a good option for those who have achieved a strong level of performance at Key Stage 3. Pupils who are considering A Level science courses and careers in medical, scientific or veterinary fields are strongly recommended to consider this option.
- **The Sciences (Double Award)** - This option leads to 2 GCSE qualifications in Science.

Please remember that if you choose Triple Science, this will take up one of your three choices in the optional subjects.

THE SCIENCES (Double Award) *Y Gwyddorau (Dyfarniad Dwbl)*

Which teacher should I see about the course?

Mr. R. Yates

What course will I be following?

The Sciences (Double Award)

What kinds of things will I study?

You will study aspects of all three sciences in this subject. The Biology topics include Keeping Healthy, The Use and Abuse of Drugs, Genetics and Evolution. In Chemistry you will study Fundamental Ideas in Chemistry, Metals and their Uses and Oils. In Physics, Energy, Heat transfer and Waves are some of the key areas.

How will my work be assessed?

Assessment is by a combination of written examinations and a practically based controlled assessment. The written papers account for 90% of the total marks and the controlled assessment task for the remaining 10%.

How can I use this course after Year 11?

Successfully completing this will allow you to opt for any of the AS and A Level science's which could lead you into career areas ranging from astrophysics and computing through engineering, forensics, geology, medicine and physiotherapy to space research and zoology.

What else do I need to know?

There are three written examinations in Y10, each worth 14.3% of the total mark allocation. There are three written examinations in Y11, each worth 15.7% of the total mark allocation. The practical assessment will normally be completed in the New Year of Year 11 and this is worth 10% of the overall mark allocation.

Google classroom page: [xy33sp4w](#)

BIOLOGY (Triple Science Option)

Bioleg

Which teacher should I see about the course?

Mr. D. Llewellyn

What course will I be following?

GCSE Biology (WJEC)

What kinds of things will I study?

- **Biology Unit 1** – Cells, respiration, digestion, circulatory system, plants and photosynthesis, ecosystems and human impact on the environment.
- **Biology Unit 2** - Classification and biodiversity, cell division and stem cells, DNA and inheritance, variation and evolution, response and regulation, kidneys and homeostasis, micro-organisms and their applications, disease.

How will my work be assessed?

Biology 1 - Written Exam 45% (June Year 10)

Biology 2 - Written Exam 45% (June Year 11)

Controlled assessment 10%

How can I use this course after Year 11?

Biology is a good choice if you really enjoy Science. It provides an excellent foundation for A level study and is a very rewarding and worthwhile subject for the development of essential skills. Biology provides an excellent platform for medicine, veterinary science, biochemistry, microbiology and para medical careers.

What else do I need to know?

GCSE Biology is part of Triple Science (with Chemistry and Physics). If you want to study this, you must choose Triple Science as one of your options.

Google classroom page: [xy33sp4w](#)

CHEMISTRY (Triple Science Option)

Cemeg

Which teacher should I see about the course?

Mr. R. Yates

What course will I be following?

GCSE Chemistry (WJEC)

What kinds of things will I study?

- **Chemistry Unit 1** – The nature of substances and chemical reactions, atomic structure and the Periodic Table, water, the ever-changing Earth, rate of chemical change, limestone
- **Chemistry Unit 2** – Bonding, structure and properties, acids, bases and salts, metals and their extraction, chemical reactions and energy, crude oil, fuels and organic chemistry, reversible reactions, industrial processes and important chemicals.

How will my work be assessed?

Chemistry 1 – Written Exam worth 45% (June Year 10)

Chemistry 2 – Written Exam worth 45% (June Year 11) Controlled assessment - worth 10%

How can I use this course after Year 11?

Chemistry is a good option if you enjoy Science. It provides an excellent foundation for progression to AS and A Level Chemistry. It is a very rewarding and worthwhile GCSE for the development of essential skills. The course also provides an excellent platform for careers in engineering, veterinary science and the medical and pharmaceutical fields.

What else do I need to know?

GCSE Chemistry is part of Triple Science (with Biology and Physics). If you want to study this, you must choose Triple Sciences as one of your options.

Google classroom page: [xy33sp4w](#)

PHYSICS (Triple Science Option)

Ffiseg

Which teacher should I see about the course?

Miss D. Blythe

What course will I be following?

GCSE Physics (WJEC)

What kinds of things will I study?

- **Physics Unit 1** - Electric circuits, generating electricity, making use of energy, domestic electricity, features of waves, the total internal reflection of waves, seismic wave, kinetic theory, electromagnetism
- **Physics Unit 2** - Distance, speed and acceleration, Newton's laws, work and energy, further motion concepts, stars and planets, the Universe, types of radiation, half-life, nuclear decay and nuclear energy

How will my work be assessed?

Physics 1- Written exam worth 45% (June of Year 10)

Physics 2 - Written exam worth 45% (June of Year 11)

Controlled assessment - worth 10%

How can I use this course after Year 11?

Physics is a good option if you enjoy Science. It provides an excellent foundation for Advanced Level Physics. It is a very rewarding GCSE which furthers the development of your essential skills. Physics is recommended if you are considering a career in medicine, engineering, astronomy, architecture, forensic science, aeronautics, climatology and many more.

What else do I need to know?

GCSE Physics is part of Triple Science (with Biology and Chemistry). If you want to study this, you must choose Triple Science as one of your options.

Google classroom page: xy33sp4w

CORE CYMRAEG

Cymraeg Craidd

Which teachers should I see about the course?

Mrs C. Nelson or any Welsh teacher

What course will I be following?

TGAU Cymraeg Craidd (CBAC) GCSE Core Cymraeg (WJEC)

What kinds of things will I study?

The context for learning the language is organised under three broad themes:

- **Identity - Hunaniaeth**
- **Culture - Diwylliant**
- **Cynefin**

You will be learning how to build your confidence and knowledge in:

- **Listening:** understand and respond to different types of spoken language;
- **Speaking:** communicate and interact effectively for different purposes, including conveying information, expressing and justifying opinion, and asking and answering questions;
- **Reading:** understand and respond to different types of written language;
- **Writing:** write effectively and accurately for different purposes using simple and familiar sentences;

How will my work be assessed?

Unit 1 - Oracy response to visual material. Non-examination assessment.

Unit 2 - Oracy response to visual material. Non-examination assessment.

Unit 3 - Written Exam with reading and writing tasks focusing on preparing for the future. 1 hour 30 minutes

Unit 4 - Written Exam with reading and writing tasks with a focus on literature and creativity. 1 hour 30 minutes

How can I use this course after Year 11?

To further develop bilingual skills, you can study the new AS / A Level Welsh Second Language course in Years 12/13.

The course aims to build confidence in communicating effectively on various topics in Welsh and develop bilingual skills.

What else do I need to know?

Possible careers looking for Welsh skills and qualifications include education, media, local government, police, journalism, health authorities, business and the public sector. Increasing the number of Welsh speakers in Wales is a national priority.

SKILLS CHALLENGE CERTIFICATE

Tystysgrif Her Sgiliau

The Skills Challenge Certificate (SCC) provides you with an opportunity to consolidate and develop essential and employability skills. It consists of three components:

- Individual Project – 50%
- Enterprise and Employability Challenge – 25%
- Community Challenge – 25%

The Individual Project and Community Challenge are completed individually and the Enterprise and Employability Challenge is completed as a team with between three to six members.

The Skills Challenge Certificate (SCC) is designed to help you build a diverse set of skills that are valuable for your personal development and future employment, such as:

1. **Preparing you for the world of work:** The SCC focuses on equipping you with essential skills that are crucial in a workplace setting, such as communication, teamwork, and time management.
2. **Developing literacy, numeracy, and digital skills:** It encourages you to strengthen core academic skills like reading, writing, mathematics, and digital literacy.
3. **Fostering active and informed citizenship:** By encouraging you to engage with global issues, the SCC helps you become more socially responsible and aware of your role in society.
4. **Broadening learning experiences:** The SCC offers you the opportunity to engage in a variety of activities and learning experiences, helping you gain a more well-rounded education.

The Skills Challenge Certificate is equivalent to one GCSE and is graded.

The qualification can be awarded at Foundation or National Level. The National Skills Challenge Certificate is graded A* - C. The Foundation Skills Challenge Certificate is graded Foundation Pass* or Foundation Pass.

Section B - Rhan B

Optional Subjects - Pynciau Dewisol

You may choose three optional subjects from this selection.

Please remember:

If you want to study Triple Science you must choose Triple Science as one of your optional subjects.





ART & DESIGN

Celf a Dylunio

Which teachers should I see about the course?

Mrs. H. Morris, Mrs A. Rees-Doe, Mrs. N. Stone

What course will I be following?

GCSE Art and Design (WJEC)

What kinds of things will I study?

You will develop an understanding of Art and Design by learning about a variety of artists, designers and craftspeople. You will experiment with an exciting range of different media, materials and techniques to improve your skills. You will be encouraged to use your imagination to be creative and expressive in your personal responses. As your confidence grows, you will be able to have more freedom to select your own themes and ideas

How will my work be assessed?

Coursework 60%

Controlled assignment 40%

How can I use this course after Year 11?

You can progress with your studies in Art and Design by studying AS Level in the sixth form.

An Art qualification shows that you are an imaginative, creative person who manipulates materials and ideas effectively to solve problems. Art and Design will enhance your thinking skills and levels of communication, both of which are important in further education and the world of work. There are career opportunities in graphics, textiles and fashion, 3D studies, photography, fine art and communication.

What else do I need to know?

- Exhibitions and gallery visits are very important.
- Use of a camera is helpful for research purposes and development of ideas.
- Art is an enjoyable but time consuming activity, so commitment to the subject is vital.

Google classroom page: w7ymz47

BUSINESS

Busnes

Which teachers should I see about the course?

Mr. M. Reekie, Mr. S. Miah, Mrs. K. Orchard

What course will I be following?

GCSE Business (WJEC)

What kinds of things will I study?

- **Unit 1: INTRODUCTION TO THE BUSINESS WORLD** – in this unit, you will explore the purpose of business activity and the nature of business enterprises, understanding the different types of business ownership and aims. Additionally, you will learn about markets and business sectors, and the importance of the consumer. You will calculate costs and revenue to make business decisions.
- **Unit 2: KEY BUSINESS CONSIDERATIONS** - in this unit, you will undertake research on a chosen business in your locality and use your research findings to produce a report.
- **Unit 3: BUSINESS STRATEGIES FOR SUCCESS** – in this unit you will explore the key business functions of finance, marketing, human resources, and production. Additionally, you will study strategies for business growth and understand how businesses are affected by political, legal, and economic external factors.
- **Unit 4: BUSINESS CREATION**– in this unit you will develop enterprise skills. You will carry out primary and secondary market research to collect information for an entrepreneurial opportunity you have identified. You will produce a report that covers key aspects of your business proposal.

How will my work be assessed?

- **Unit 1:** Worth 30% of the qualification. Written exam
- **Unit 2:** NEA worth 15% of the qualification
- **Unit 3:** Worth 30% of the qualification. Written exam
- **Unit 4:** NEA worth 25% of the qualification

How can I use this course after Year 11?

GCSE Business will prepare you for many careers in business and industry. These include in marketing and public relations, law, finance and accounting, human resource management, as well as manufacturing and production. An understanding of the principles of management is applicable to many roles in both the public and private sector and will be valuable for whatever career path you choose.

Google classroom page: fe3jyxs

COMPUTER SCIENCE

Cyfrifiadureg

Which teachers should I see about the course?

Mr. D. Joslin, Mr. M. Jones, Mr. J. Gallagher

What course will I be following?

GCSE Computer Science

What kinds of things will I study?

- You will develop your understanding of the way computers work
- You will apply the concepts of computer science including; computer logic, algorithms and data representation
- You will solve problems in computational terms including; writing and debugging pieces of code.
- You will be encouraged to create your own applications and other systems, rather than simply use those designed by others.

How will my work be assessed?

- **Unit 1:** Understanding Computer Science Digital examination:
1 hour 30 minutes 50% of qualification
- **Unit 2:** Computer Programming On-screen examination based on a pre-released brief:
2 hours 50% of qualification

How can I use this course after Year 11?

Computing is always developing and expanding – current students need to be prepared for jobs that don't yet exist and use technologies that haven't been invented. The demand for computing professionals in this area is increasing. The depth of coverage means that it provides a solid foundation for either the study of A Level Computer Science or employment.

What else do I need to know?

In Unit 2 you will explore the concept of programming, develop programming skills using Python and improve your problem solving and design skills as well as build appropriate user interfaces. In Year 10 you will need to familiarise yourself with a scenario ready to complete the examination based on the pre-released brief in Year 11.

Google classroom page: d53ix2v

DESIGN AND TECHNOLOGY – THREE DIMENSIONAL DESIGN

Dylunio a Thechnoleg - Dylunio Tri Dimensyinol

Which teachers should I see about the course?

Mr. S. Doe, Mr S Hughes

What course will I be following?

GCSE Art: Three Dimensional Design (WJEC)

What kinds of things will I study?

Year 10 is a foundation year which enables you to produce a number of projects using a wide range of materials and processes. The subject also gives you the opportunity to design and produce products for your own hobbies and interests. In Year 11 you will undertake two units, one completing before Christmas and the other set by the exam board in January until the end of April.

How will my work be assessed?

Unit 1: Portfolio 60%

Unit 2: Externally set assignment 40%

How can I use this course after Year 11?

The subject enables you to study A Level D&T Three Dimensional Design at Olchfa. The subject also enables you to apply for apprenticeships and courses at local companies and colleges.

What else do I need to know?

The subject requires you to present your work effectively, using a range of graphic skills and CAD that present innovative and creative designs. You must then show good levels of accuracy in the construction of both projects and final products.

Google classroom page: dsurynu



DIGITAL TECHNOLOGY

Technoleg Ddigidol

Which teachers should I see about the course?

Mr D. Joslin, Mr M. Jones & Mr J. Gallagher

What course will I be following?

GCSE Digital Technology

What kinds of things will I study?

You will learn about how digital technology impacts on the lives of individuals, organisations and society. The Digital Technology GCSE will enable learners to:

- Become independent, confident and knowledgeable users of existing, new and emerging digital technologies
- Develop knowledge of different digital technology systems used across a range of occupational sectors
- Develop skills in organising and analysing data to identify trends and audiences
- To become creators of digital products, in a variety of formats and for a variety of purposes, that meet specified, authentic needs
- Develop transferable skills in using a range of hardware and software
- Develop their understanding of the systems development life cycle and how ideas can become products.

How will my work be assessed?

- **Unit 1:** The Digital World (On Screen Exam: 1 hour 30 minutes) - 40%
- **Unit 2:** Digital Practices (Non-Exam Assessment (NEA): 20 hours) - 40%
- **Unit 3:** Communicating in the Digital World (Non-Exam Assessment (NEA): 10 hours) - 20%

How can I use this course after Year 11?

We are living and developing in an ever changing digital world - the Digital Technology qualification is designed for learners who wish to begin their journey towards a career that utilises digital technologies or to progress onto advanced level programmes of learning involving digital technologies.

What else do I need to know?

The GCSE Digital Technology is a broad-based qualification that allows learners to build on their digital skills, knowledge and understanding of technology systems that are used in our connected and globalised society. The NEA tasks will allow you to immerse yourself into the world of big data and digital technologies. The NEA tasks will allow you to further your understanding in social media and online marketing communications, as well as creating digital assets, such as: a website, an animation or a game and modelling data using spreadsheet software as well as planning digital communications to solve a problem.

Google classroom page: gn6yrto

DRAMA

Drama

Which teachers should I see about the course?

Mrs. Z. Beynon, Mr. C. Hopkins

What course will I be following?

GCSE Drama (WJEC)

What kinds of things will I study?

You will be studying various theatre practitioners and their respective styles in order to create devised pieces of theatre and recreate performances from scripts. You will develop and refine your characterisation and performance skills needed throughout your life. You will watch and evaluate professional, live theatre performance.

How will my work be assessed?

Throughout the course, 70% of your work will be assessed through scripted and devised practical performances. The final 30% of the course will be a written examination on a set text that has been studied practically in class.

How can I use this course after Year 11?

There are many Further Educational courses that Drama leads the way to, such as A Level Drama, Theatre Arts, Performing Arts BTEC and Production Arts BTEC. Following on from this, there are many reputable Performance degrees available at Universities, and Diplomas from Drama Schools. In terms of transferable skills, your communication skills, creativity, cooperation skills and public speaking skills will all have developed over the two years. These are all valuable skills that can be utilised in all areas of further education and future employment.

What else do I need to know?

Commitment to after school and lunch time rehearsals is essential. Participation in Extra Curricular performances is encouraged as it gives you the opportunity to progress and try out new skills.

Google classroom page: [gdlr23c](#)

FRENCH

Ffrangeg

Which teachers should I see about the course?

Mrs. N. Smart, Mrs. A. Davies

What course will I be following?

GCSE French Full Course (WJEC)

What kinds of things will I study?

You will study a range of topics and broad themes, some of which include:

Language for leisure and wellbeing:

- identity and culture
- family/friends/relationships
- free-time

Language for travel:

- places in town
- environment and sustainability

Language for study and work:

- future plans
- higher education
- world of work

How will my work be assessed?

Unit 1 - Oracy 30% (NEA)

Unit 2 - Reading and writing 15% (NEA)

Unit 3 - Listening - 20%

Unit 4 - Reading and writing 35%

How can I use this course after Year 11?

Following on with AS/A Level or with the following careers:

Teaching, translating, interpreting, business, community services, finance, tourism, public services, education, sporting careers, journalism, accountancy, hospitality industry, sales and marketing, law, medicine, acting, TV and radio presenting, manufacturing, diplomatic services, police force, European Union, government and many, many more!

What else do I need to know?

For further information, speak to your class teacher or arrange to see Mrs. N. Smart (Room 21). If you are particularly good at or enjoy languages, it may be appropriate to choose both Spanish and French for GCSE.

Google classroom page: roj3hjsy

GEOGRAPHY

Daearyddiaeth

Which teachers should I see about the course?

Mrs. G. Quick, Mrs. C. Husband, Mrs. M. Nightingale

What course will I be following?

GCSE Geography (WJEC)

What kinds of things will I study?

UNIT 1: OUR PHYSICAL AND HUMAN WORLD: including drainage basins and rivers, changing coastlines, migration and settlement change.

UNIT 2: DEVELOPING FIELDWORK SKILLS: You will carry out a fieldwork visit based on a topic like change over time or environment, investigate this in a chosen location and write a fieldwork enquiry to be submitted to WJEC.

UNIT 3: OUR DYNAMIC AND DIVERSE WORLD: including the geography of inequality, the highs and lows of our weather, wild weather, continual climate change and managing global challenges.

UNIT 4: SUSTAINABLE SOLUTIONS: You will receive a resource booklet on a geographical issue, conduct background reading, and write a report based on a real-world decision-making task.

How will my work be assessed?

- **UNIT 1:** Worth 30% of the qualification. Written exam - 1 hour 30 minutes.
- **UNIT 2:** NEA worth 25% of the qualification
- **UNIT 3:** Worth 30% of the qualification. Written exam - 1 hour 30 minutes.
- **UNIT 4:** NEA Worth 15% of the qualification

How can I use this course after Year 11?

Geography is a subject which suits almost everybody; from scientific people to artistic people. Geographers go into a wide variety of professions and it is a subject highly valued by employers. According to many, Geography graduates are the most employable in the country due to the wide variety of skills they acquire from studying the subject.

Google classroom page: chyhyik

GRAPHIC COMMUNICATION

Cyfathrebu Graffeg

Which teacher should I see about the course?

Mr. N. Francis

What course will I be following?

GCSE Art: Graphic Communication (WJEC)

What kinds of things will I study?

You will develop an understanding of Graphics by learning about a variety of artists and Graphic designers. You will experiment with an exciting range of different media, materials and techniques to improve your skills. You will be encouraged to use your imagination to be creative and expressive in your personal responses. You will learn how to use both Illustrator and Photoshop. As your confidence grows, you will be able to have more freedom to select your own themes and ideas.

How will my work be assessed?

Coursework 60%

Practical examination 40%

How can I use this course after Year 11?

You could progress with your studies of Graphics by studying AS Level Graphics at A level.

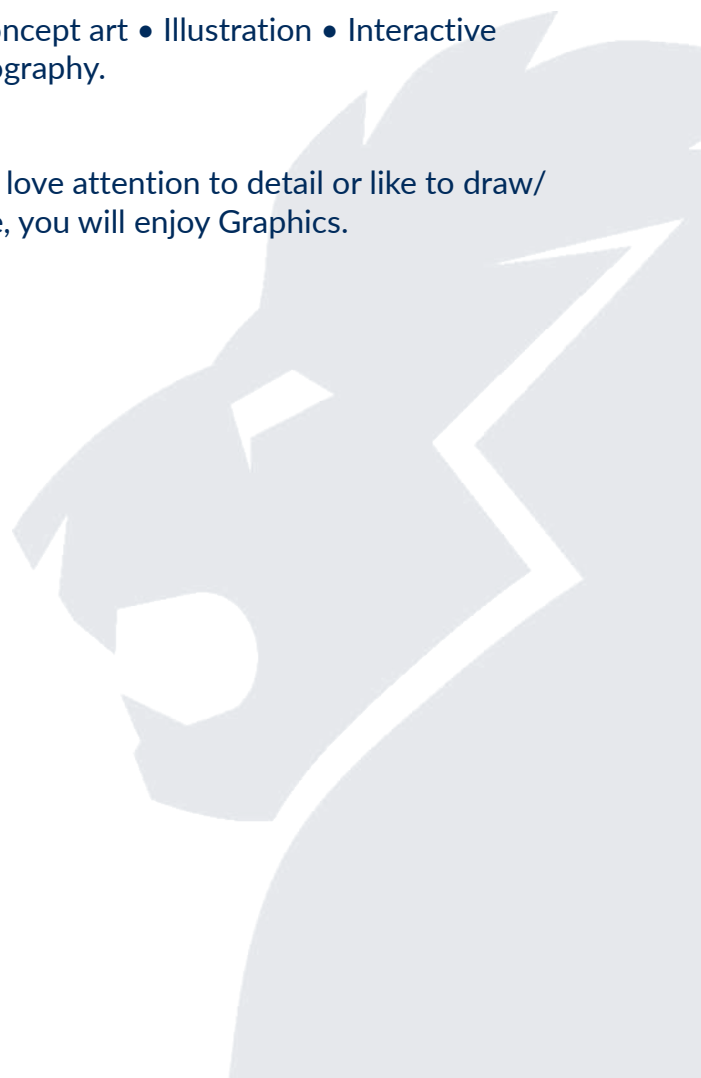
Careers in Graphics include:

Advertising and branding • Information design • Concept art • Illustration • Interactive media • Motion graphics • Packaging design • Typography.

What else do I need to know?

You may be a creative person, like using computers, love attention to detail or like to draw/doodle from time to time. If you're one of the above, you will enjoy Graphics.

Google classroom page: [Itif7g3](#)



HEALTH AND SOCIAL CARE AND CHILDCARE

Iechyd a Gofal Cymdeithasol a Gofal Plant

Which teachers should I see about the course?

Mrs. A. Donald, Mrs. K. Scordino, Mrs C. Tucker

What course will I be following?

GCSE Health and Social Care and Childcare (WJEC)

What kinds of things will I study?

You will learn about:

- **UNIT 1 - Health and social care and childcare in Wales in the 21st century**
(The life cycle and factors that affect growth / The promotion and maintenance of health and wellbeing/ Core principles and values / Legislation)

- **UNIT 2 - Adult health and social care**
(Individual needs/Illness in adulthood/Achieving positive outcomes/The role of health promotion in public health in Wales)

- **UNIT 3 - Childcare**
(Life stages/Expected milestones/ PILES development/Conditions and illnesses amongst children/How professionals work)

How will my work be assessed?

- Unit 1 = 1 hour 30 examination (40% of qualification)
- Unit 2 = Non-exam assessment (30% of qualification)
- Unit 3 = Non-exam assessment (30% of qualification)

How can I use this course after Year 11?

- You can continue to study Health and Social Care in Olchfa Sixth form at AS and A2 level.
- You can take a degree in Health and Social Care at university.

This can lead to many careers such as nursing, midwifery, teaching, social work, child psychology.

What else do I need to know?

The Health, Wellbeing and Social Care sector is the biggest employer in South Wales, creating more jobs than any other sector. Our GCSE and A level results are excellent, with many pupils going on to successfully study a related course in higher education.

Google classroom page: jwabust

HISTORY

Hanes

Which teachers should I see about the course?

Mrs. D. Thomas, Mr. R. Sanger, Miss. J. Morris, Mr. A. Evans, Mr. M. Devaney, Miss R. Page

What course will I be following?

GCSE History (WJEC).

What kind of things will I study?

- **Unit 1:** Wales and the early Tudors c.1485-1509: The accession of Henry VII, the governance of Wales under Henry VII c. 1485-1509, Henry VIII's early attempts to control Wales, 1509-1536, the impact of the early Reformation in Wales, the Acts of Union, 1536 and 1543.
- **Unit 2:** The Black Death c.1330-1360: a case study in medieval society: How the disease spread and attempts to limit its spread, reactions to the disease, the legacy of the Black Death.
- **Unit 3:** Changes in US society c.1880-c.1980: Race and immigration, the Roaring Twenties, the end of prosperity, civil rights c. 1945-c.1968, second-wave feminism c. 1960-c. 1980.
- **Unit 4:** A Changing Society: One hundred years of modern British history focusing on culture, equality and inequality, ethnicity, international relations, peace and conflict, politics, religion, sexuality and gender, social issues and economic issues.

How will my work be assessed?

Two examinations (units 1 and 3) worth 30% each

Two Non-Examination Assessments (units 2 and 4) worth 20% each

How can I use this course after Year 11?

GCSE History serves as a platform for further study at A level and university, either in History itself or a wide range of alternative disciplines. It helps develop academic skills crucial in a range of fields. These include the ability to engage with relevant information, analyse sources and interpretations, shape arguments and reach balanced conclusions.

Employers are always looking for young people who are able to think critically and analytically, both key attributes of the historian. Studying GCSE History can help you take the first steps towards a variety of career paths including law, journalism, teaching, marketing, human resources and management.

Google classroom page: zzshjiz

HOSPITALITY AND CATERING

Lletygarwch ac Arlwyo

Which teachers should I see about the course?

Mrs. K. Scordino

What course will I be following?

WJEC Level 1 /2 Hospitality and Catering

What kinds of things will I study?

You will develop a knowledge and understanding of the hospitality and catering industry. You will learn how to plan, prepare and cook nutritional dishes, including starters, main meals and desserts. You will develop the practical skills required within the catering sector, completing tasks that mirror industry practice.

How will my work be assessed?

WJEC Vocational Awards in Hospitality and Catering consist of two units:

- **Unit 1:** Portfolio 60%
- **Unit 2:** Externally set assignment 40%

How can I use this course after Year 11?

You can progress to the Level 3 Applied Certificate / Diploma in Food Science and Nutrition Level 2/Level 3 Diplomas in Hospitality and Catering, Level 2/Level 3 Diplomas in Professional Cooking or the Level 3 Diploma in Hospitality and Tourism Management.

What else do I need to know?

Photographs of your practical work will be taken to support assessment. The British Hospitality Association, hospitality and catering is Britain's fourth largest industry and accounts for around 10% of the total workforce. Since 2010, over 25% of all new jobs have been within the hospitality and catering sector with the majority of new roles falling within the 18-24 age groups.

Google classroom page: ewirmlw

DIGITAL MEDIA AND FILM

Cyfryngau Digidol a Ffilm

Which teacher should I see about the course?

Mr. D. Thomas

What course will I be following?

WJEC GCSE Digital Media and Film

What kinds of things will I study?

This exciting new course explores the ever-changing world of Digital Media and Film. You will study a wide range of topics that reflect how media shapes the modern world, including:

- Welsh and global film
- Video gaming
- Social Media
- Online news
- You will develop analytical, creative and technical skills while learning how media products are designed, produced and distributed in the digital age.

How will my work be assessed?

30% On-screen examination

70% Non-examination assessment (coursework)

The non-examination assessment (NEA) involves producing your own original digital media products and researching how the media and film industries in Wales distribute and exhibit content.

A significant portion of the NEA is practical. The WJEC set brief will allow you to develop an idea for either:

- a new film
- a video game
- a new series for a streaming platform

How can I use this course after Year 11?

You may wish to use your qualification to study Media at AS and A Level or you may wish to pursue a career in the media.

Media students often go on to pursue careers in:

- Journalism
- Television and film production
- Advertising and marketing
- Research
- Lighting and sound design

What else do I need to know?

Please see Mr D. Thomas for any further information.

MUSIC

Cerddoriaeth

Which teachers should I see about the course?

Mr. A. Colborne, Mrs Mellin

What course will I be following?

GCSE Music (WJEC)

What kinds of things will I study?

GCSE Music is an interesting and creative course that equips pupils with a number of valuable skills.

At Olchfa we follow the WJEC course, this provides opportunities for:

- already accomplished musicians to develop their talents and intensify their studies;
- all pupils who may have enjoyed the subject during Key Stage 3 and are now keen to further their interest and improve their musical skills.

Similarly, to KS3, activities are centred on performing, composing and appraising are central to the course. These allow you to:

- Become actively engaged in all aspects of music-making
- Perform confidently
- Analyse and appraise music taken from a wide variety of styles
- Develop composing skills, presenting well organised and stylish musical ideas

How will my work be assessed?

- **32.5% Performing** – You will perform and record two solo pieces on your instrument or voice, ideally of a Grade 3 standard (there is no requirement to have sat the Grade 3 examination)
- **32.5% Composing** – You will compose two pieces of music (You may use computer software if you wish).
- **35% Appraising** – You will sit a listening examination at the end of Year 11 that will ask questions on pieces of music in a range of styles, from Classical to Pop, including two pieces that are set works for study.

How can I use this course after Year 11?

Studying Music has an enormous range of benefits. It promotes creativity, self-discipline and analytical skills to name but a few. After Year 11, you could go on to study AS Music at Olchfa. Music is classified as an academic qualification by the Russell group of universities, meaning it combines well with any subject at A Level.

What else do I need to know?

Commitment to after school and lunch time rehearsals is essential. Participation in extra-curricular performances is encouraged as it gives you the opportunity to progress and try out new skills.

PHYSICAL EDUCATION AND HEALTH

Addysg Gorfforol ac Iechyd

Which teachers should I see about the course?

Mr. S. Davey, Mr. C Reeves, Miss J. Brown, Mr. L. Clement, Mr. L. Eynon, Mr. C. Greatrix, Mrs. C. James, Mr. A. Marsh, Miss S. Topper, Mrs A. Ruggieri

What course will I be following?

GCSE Physical Education (WJEC)

What kinds of things will I study?

The course is a combination of both practical and theory work. Practical lessons focus on developing skills and understanding in a wide variety of different sports. You can also get assessed in sports you play outside school that we are unable to cater for (e.g. skiing). Theory lessons involve detailed study of topics such as fitness, psychology, anatomy, nutrition and sports technology.

How will my work be assessed?

Practical performance and understanding in two sports, as well as producing a personal fitness plan account for 60% of your qualification.

Theoretical understanding makes up the other 40% of the qualification and that is assessed by an external examination at the end of Year 11.

How can I use this course after Year 11?

You could develop your understanding further by studying AS level PE or BTEC Sport in the Sixth form. For anyone who is interested in a possible career in the sports industry, this course is an excellent starting point. Potential career opportunities in the fields of teaching, physiotherapy, strength and conditioning, coaching, psychology and nutrition could be areas that this qualification may benefit.

What else do I need to know?

As 60% of your final mark will come from your practical performance, being a good all-round performer with a keen interest in sport will be a real advantage. However, the most important thing you need is a genuine interest in developing your understanding and performance in all aspects of sport and PE.

Google classroom page: q23jde3

PUBLIC SERVICES

Gwasanaethau Cyhoeddus

Which teacher should I see about the course?

Mrs. B. Lewis, Mr. L. Eynon, Mr. C. Greatrix

What course will I be following?

BTEC First Award in Public Services Level 2 Outcome: one GCSE equivalent.

You will study teamwork and communication skills needed for working in public services and the employment skills required to work in the uniformed organisations. In addition, you will look at improving health and fitness in the uniformed organisations.

How will my work be assessed?

BTECs Firsts are divided into:

- Core or mandatory units
- Optional specialist units

Each unit covers a specific area of knowledge, skills and understanding required by the sector.

Every BTEC First learner will study the mandatory units, ensuring all students gain a solid foundation through a broad understanding and knowledge of the sector.

75% internally assessed assignments, reports, guest speakers, presentations and group work. All learning outcomes must be met to pass the course.

25% externally assessed by a one hour 50 mark test.

How can I use this course after Year 11?

It is an excellent gateway qualification to access the next level of Public Services study. If you are considering studying Public Services Level 3 at college, this is an excellent starting point.

As well as gaining a formal qualification, Public Services teaches us how to develop a whole host of very important life skills (speaking, listening, empathy, understanding teamwork, patience, problem solving and the ability to work well with others to name but a few.

Google classroom page: pzbbv7v

RELIGIOUS STUDIES

Astudiaethau Crefyddol

Which teachers should I see about the course?

Mrs. T. Purton

What course will I be following?

GCSE Religious Studies (WJEC)

What kind of things will I study?

You will learn about the beliefs, teachings and practices of religious and non-religious beliefs to understand their impact on peoples' actions and way of life. You will study the different perspectives that religious and non-religious people have about some of life's biggest philosophical and ethical questions, such as 'what makes us human?' and 'how are actions judged as right or wrong?'

You will develop in-depth knowledge and understanding of Christianity, Islam and non-religious beliefs (such as Humanism) by looking at the key traditions, texts, sources of authority and teachings that are central to these world-views.

The course will also engage your curiosity about the purpose of life, from contrasting religious and non-religious perspectives. Some of the themes explored are:

- Relationships
- Roles, Rights and Responsibilities
- Human Rights

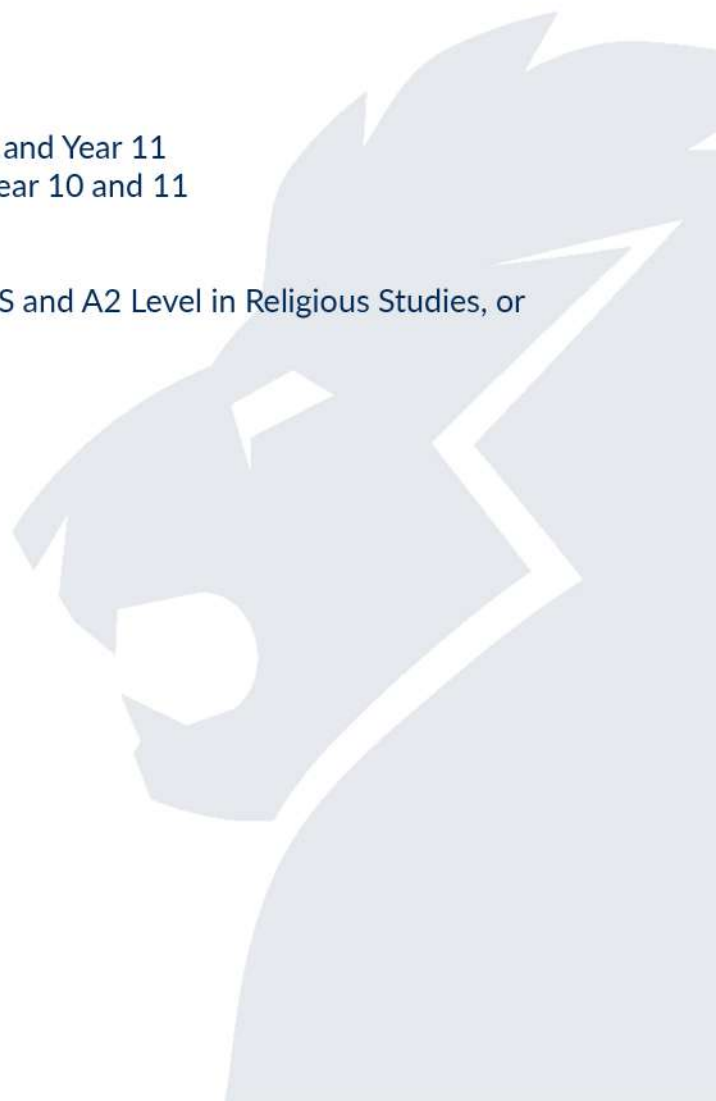
How will my work be assessed?

- Two written examinations spread over Year 10 and Year 11
- Two non-examined assessments spread over Year 10 and 11

How can I use this course after Year 11?

The course provides the basis for further study at AS and A2 Level in Religious Studies, or other Humanities subjects.

Google classroom page: [115n44h](#)



RETAIL BUSINESS

Business Adwerth

Which teachers should I see about the course?

Mr. S. Miah and Mrs K. Orchard

What course will I be following?

Level 2 Award in Retail Business (WJEC). Outcome: one GCSE equivalent

You will have the opportunity to explore various aspects of retail business. The different topic areas include business of retail, customer service, merchandising and marketing.

How will my work be assessed?

There will be one externally assessed examination worth 40% and two internally assessed (and externally moderated) controlled assessments worth 60%.

Unit 1: The business of retail - Written Examination: 1 hour and 30 minutes 40% of the qualification.

Unit 2: Customer Service in retail - Controlled assessment: 6 hours 30% of the qualification.

Unit 3: Merchandising and marketing retail products. Controlled assessment: 8 hours 30% of the qualification.

How can I use this course after Year 11?

The successful completion of this qualification, together with other equivalent qualifications, could provide you with opportunities to access a range of Level 3 qualifications including GCE Advanced Level Business and Economics.

What else do I need to know?

You will be visiting a range of retailers and working directly with people in the retail sector.

Google classroom page: cpqakfr

SPANISH

Sbaeneg

Which teachers should I see about the course?

Mrs. N. Smart, Mrs. A. Davies, Ms. R. Salmon

What course will I be following?

GCSE Spanish Full Course (WJEC)

What kinds of things will I study?

Three broad themes, building on topics studied in Key Stage 3, for example:

Language for leisure and wellbeing:

- identity and culture
- family/friends/relationships
- free-time

Language for travel:

- places in town
- environment and sustainability

Language for study and work:

- future plans
- higher education
- world of work

How will my work be assessed?

- Unit 1 - Oracy 30% (NEA)
- Unit 2 - Reading and writing 15% (NEA)
- Unit 3 - Listening - 20%
- Unit 4 - Reading and writing 35%

How can I use this course after Year 11?

Following on with AS/A Level or with the following careers:

Teaching, translating, interpreting, business, community services, finance, tourism, public services, education, sporting careers, journalism, accountancy, hospitality industry, sales and marketing, law, medicine, acting, TV and radio presenting, manufacturing, diplomatic services, police force, European Union, government and many, many more!

What else do I need to know?

For further information, speak to your class teacher or arrange to see Mrs. N. Smart (Room 21). If you are particularly good at or enjoy languages, it may be appropriate to choose both Spanish and French for GCSE.

Google classroom page: roj3hjsy

SPORT

Chwaraeon

Which teachers should I see about the course?

Mr. L. Clement, Mr. L. Eynon, Mr S. Davey

What course will I be following?

BTEC Level 2 First Award in Sport Outcome: One GCSE grade equivalent

What kinds of things will I study?

Fitness for Sport & Exercise

Practical sport (two sports)

Leading Sports Activities

Training for Personal Fitness

The Mind and Sports Performance

How will my work be assessed?

75% of the course is based around three controlled assessment tasks. The other 25% consists of an exam sat in year 10. The assignments will all be set by your teachers based on information provided by the exam board.

How can I use this course after Year 11?

You can go on to study various BTEC Sport Qualifications, one of which we offer here in sixth form. Or you could go on to study AS Physical Education. This course will provide a solid foundation for anyone wishing to go into a career in physiotherapy, sports science or teaching physical education.

What else do I need to know?

You need to have a keen interest in sport and while practical ability is not essential, it is desirable.

You must be prepared to research and study all aspects of sport.

You will also have the opportunity to achieve coaching / leadership qualifications.

Google classroom page: tfo47ko

TEXTILE DESIGN

Dylunio Tecstiliau

Which teachers should I see about the course?

Mrs. H. Morris

What course will I be following?

GCSE Art and Design - Textile Design (WJEC)

What kinds of things will I study?

You will develop an understanding of Textile Design by learning about a variety of artists, designers and craftspeople. You will experiment with an exciting range of textile media, processes and techniques to improve your skills. You will be encouraged to use your imagination to be creative and expressive in your personal responses. As your confidence grows, you will be able to have more freedom to select your own themes and ideas.

How will my work be assessed?

Coursework 60%

Controlled assignment 40%

How can I use this course after Year 11?

You can progress with your studies in Creative Textiles by studying AS Level Textile Design or Art and Design in 6th Form.

A Textile Design qualification shows that you are an imaginative, creative person who manipulates materials and ideas effectively to solve problems. Textile Design will enhance your thinking skills and levels of communication, both of which are important in further education and the world of work. The further education pathways include Art, fashion and textile degrees, textile science and technology, performance sportswear design, garment technology, fashion pattern cutting and contour fashion.

What else do I need to know?

- Exhibitions and gallery visits are very important.
- Use of a camera is helpful for research purposes and development of ideas.
- Textile Design is an enjoyable and practical subject and time consuming activity, so commitment to the subject is vital.

Google classroom page 5tyeuf4

TOURISM

Twristiaeth

Which teacher should I see about the course?

Mrs. G. Quick, Mrs. C. Husband, Mrs M Nightingale

What course will I be following?

Tourism Level 2 Award (WJEC) Outcome: one GCSE equivalent

What kinds of things will I study?

The Tourism Level 2 Award introduces you to one of the most important and dynamic employment sectors in the UK. You will have the opportunity to explore various aspects of tourism such as the business of tourism and developing UK tourist destinations.

How will my work be assessed?

75% of the course is based around two controlled assessment tasks. These are similar to coursework tasks but are completed in class. The other 25% consists of an examination sat at the end of Year 11.

How can I use this course after Year 11?

The WJEC Level 2 Award in Tourism is designed to help you learn about tourism, especially if you wish to pursue a career in this sector. This course is also suitable as a foundation for further study.

What else do I need to know?

Tourism is one of the fastest growing industries in the UK.

Google classroom page fspmzbu











OLCHF A

Dysg Dawn Daioni

